



MAIDEN BRADLEY NEWS

FEBRUARY 2025

THE MAIDEN BRADLEY PANTO RETURNS!

MAIDEN BRADLEY PARISH NEWS - ISSUE 428
DIARY FEBRUARY 2025

FRIDAY 31ST JAN & SATURDAY 1ST FEB **FASHION SALE BY BEATRICE VON TRESCKOW**
Sunday 2nd **10:00 Parish Communion at St George's Bourton**
Monday 3rd **Green waste collection**
Wednesday 5th **Blue bin and black box recycling collection**
Sunday 9th **10:00 Morning Worship - Maiden Bradley**
Wednesday 12th **Household waste collection**
Sunday 16th **10:00 Parish Communion - St Peter's Stourton**
Monday 17th **Green waste collection**
Wednesday 19th **Blue bin and black box recycling collection**
Thursday 20th **DEADLINE FOR COPY TO MBNEWS**
THURSDAY 20TH **7:30 PANTOMIME SNOW WHITE IN BRADLEY WOOD**
FRIDAY 21ST **7:30 PANTOMIME SNOW WHITE IN BRADLEY WOOD**
SATURDAY 22ND **2:30 AND 7:30 SNOW WHITE IN BRADLEY WOOD**
Sunday 23rd **10:00 Parish communion - Maiden Bradley**
Wednesday 26th **Household waste collection**

Sunday 2nd March **Morning Worship - St George's, Bourton**



BUS SERVICES FROM THE BUS STOP BY THE KNAPP
 FROME - WEDNESDAYS DEPART 9.53AM RETURN 12.25 NB CORRECTED
 WARMINSTER - FRIDAYS DEPART 9.35AM RETURN 12.30

REGULAR EVENTS IN THE HALL

MONDAYS	9.30AM-10.30AM	PILATES
MONDAYS	10.45AM-11.30AM	CHAIR PILATES
MONDAYS	5.00PM-6.00PM	DR'S SURGERY
TUESDAYS	9.30AM-10.30AM	BRADLEY BABES
TUESDAYS	1.00PM-3.00PM	POST OFFICE SERVICE
WEDNESDAYS	10.00AM-11.15AM	SILVER SNEAKERS
THURSDAYS	9.30AM-10.30AM	PILATES
FRIDAYS	10AM-12NOON	COFFEE MORNING

BOOK LIBRARY AVAILABLE DURING HALL OPENING FRIDAY MORNINGS UNTIL APRIL

Support needed with computers, broadband or phones ?

CONTACT THE VILLAGE HELPDESK

Computing at Home
 Nigel Lavender - 01985 844637

MAGAZINE AVAILABLE ONLINE ON THE VILLAGE WEBSITE:
WWW.MAIDENBRADLEYVILLAGE.ORG.UK

USEFUL TELEPHONE NUMBERS

Speed Watch Co-ordinator	Simon Wager	simon.m.wager@gmail.com
Neighbourhood Watch Co-ordinator	Derek Stevens	01985 844428
Community Garden	Sam Ribeck	sam.ribeck@btinternet.com
Book Club	Jessica Johnson	01985 844174
Cookery Demonstrations	Rosie Brown	01985 844236
Luncheon Club	Margaret	01985 844756
Welcome Club Outings	Pearl	01985 219289
Memorial Hall bookings	bookingsmaidenbradleyhall@gmail.com	01985 845303
Dr Andrew Murrison MP	murrisona@parliament.uk	01225 358584
Bill Parks (Wiltshire Cllr)	bill.parks@wiltshire.gov.uk	07712 490075
Mere Link Scheme		01747 860096
Bell Ringing Tuesday 7.30pm in the Church Bell Tower - beginners welcome		01985 845397
Church contact	Diana Bourne	07775 625448
Environmental issues	greenermaidenbradley@gmail.com	
Nadder Oil Buying Club	Email:richard.willan@me.com	www.oilbuyingclub.com

EDITORIAL

I am delighted to report that my garden is showing the first signs of spring: daffodils, crocuses and snowdrops are poking their green fingers above the soil. The seasons are a wonderful thing but in my book you can certainly have too much of winter. Without the rain and freezing temperatures, I have really been enjoying my walks. It made me think that we all live in this beautiful countryside and probably all walk many of the same paths, but I have lived here for 11 years and have only just found a section of a local walk that I had never discovered before. So do let me know if you have a special walk that you think we would all love. If you don't want to write it up, I am happy to explore it and then report back to everyone.

I have attached the screenshot from my app that shows one of my favourite walks, it takes about 2 hours and starts and finishes at Baycliffe Farm (marked B on the map). It takes in the top of Brimsdown Hill with its panoramic views, before cutting through the woods (which in the spring are awash with bluebells), then through the fields to the road which you cross into a hedged track leading to Horningsham. Once you hit the road you turn left and walk to the school where you turn left up a lane that turns into a track before cutting through a small wood, down a hill to Pottle Street. Lastly, the path crosses the fields back to Baycliffe. Hope you enjoy it.

Rosie Brown, ably assisted by Poppy Phillips, is going to be putting together a recipe each month that either uses seasonal fayre or is appropriate to the time of year. We kick off with some jam tarts (or should they be called 'jam hearts' see picture) as it is of course Valentines Day on 14th. All the ingredients, where possible, for the recipes can be bought at the Bradley Pantry. Thank you both for this initiative.

As ever if you have any ideas for articles that you would like to be included in the magazine do let me know.

Gilly



Snow White in Bradleywood

THE MAIDEN BRADLEY PANTO

MAIDEN BRADLEY MEMORIAL HALL
20th, 21st and 22nd February 2025



PERFORMANCE TIMES
7.30pm Thursday and Friday
2.30pm and 7.30pm Saturday
Doors open 30 mins earlier
LICENSED BAR



TICKETS FROM
eventbrite
or Carol Kenzie
01985 844745
£5 children £10 adults

PLEASE SUBMIT ALL ARTICLES FOR INCLUSION IN THE NEWS BY THE
20TH OF EACH MONTH BY EMAIL TO:
editormaidenbradleynews@gmail.com

DARKNESS AND LIGHT



If the headlines are anything to go by, the problems of 2024 have been carried forward into 2025. We emerged from our Christmas festivities to reports of the continuing situation between Hamas and Israel, to dire predictions about global warming (including the terrible forest fires around Los Angeles), underlined by some unpleasant news about the effect of the “quademic” of winter sickness, and lots more gloom. By the time you read this, however, the evenings will be much lighter, the weather may have improved, Spring will be on its way . . . and

there may be other things to lighten the media and its otherwise gloomy news.

However, I frequently find myself thinking about the often awful reporting of the Church, including my own Church of England. Too often, the Church seems preoccupied with “sin” but fails repeatedly to deal with it within its own structures. Over the past decade or so, Church “success” has become more and more gauged by the number of bottoms on pews, rather than the way the Church fulfils its God-given role, of “finding out what God is doing, and joining in” (the best definition of *Mission I’ve come across*). However, once my own Church of England has addressed its current leadership crisis, then perhaps we will be able to concentrate of Jesus’ priorities: of bringing good news to the poor, of proclaiming release to the captive and recovery of sight to the blind, of letting the oppressed go free, of proclaiming the year of the Lord’s favour (cf Luke 4.18-19).

One of the readings Christians traditionally hear early in the New Year is the story of Jesus at a wedding party. It starts with a problem: the host runs out of wine. Yet in this story (John chapter 2), Jesus creates new wine for the assembled company from the water standing in the huge jars that stood ready to wash the feet and hands of the guests. The first thing Jesus is recorded as doing in Saint John’s gospel is making people happy and sharing in their joy. Later on Jesus says, “I came that they may have life, and have it abundantly”. Here, surely, is something to correct the melancholic imbalance of contemporary life.

In February – which for some people is the gloomiest and darkest of months – why not come along to the Christingle Service in Bourton on 2nd February to celebrate LIGHT, and help support The Children’s Society in bringing light and abundant life to so many children?

Graham Southgate (Rector)

CHRISTINGLE SERVICE

Sunday 2nd February 2025
at 4 p.m.
in Saint George’s Church,
Bourton.



Christingle celebrations normally take place between Advent and Candlemas, when Christingles are lit during the service as symbols of Jesus’ light.

Christingles are oranges wrapped in red tape, decorated with dried fruit or sweets, with a candle on the top.

EVERYONE WELCOME!

MESSY CHURCH

A new style of all-age worship for the parishes of
Upper Stour with Maiden Bradley.

Messy Church is a way of being church for families and others. It is intended for all ages, and is based on creativity, hospitality and celebration.

Sunday 23rd February at 4 p.m.
in Saint Martin’s Church, Zeals.

For more information, please contact Graham Southgate (the Rector)
on 01747 476316 / rector@uswmb.co.uk

"FROM THE PARISH REGISTERS"

Holy Baptism

Hermione Diana Charles

in the Parish Church on 29th December 2024

Maiden Bradley Memorial Hall

A massive thank you to everyone who supported our Quiz night on the 17th. It was a great night with an a full house and wonderful atmosphere. A big thanks to Bob and Jed who hail from Frome and kindly volunteered to run the show.

The winning team were 'The Rivals'

We are hoping to arrange another Quiz in late May so you have plenty of notice to get your teams organised.

The Fashion clearance sale begins from 11am on Friday the 31st January - so why not come along and enjoy a coffee and bake at our coffee morning before browsing what's on offer from the sale.

The sale continues on Saturday February 1st.

Rehearsals are in full swing and tickets are selling fast for the Pantomime so make sure you secure your seats for what is sure to be a great show.

Tickets available online from Eventbrite or in person from Carol Kenzie

The committee are planning ahead with the organising of our Summer produce show and fayre, possibly to be held in July. We would welcome any new ideas you may have to include in the show. We would also be grateful if any of you villagers were able to spare some time in joining a sub committee to help organise the event.

Keith Appleton



CLOSURE OF THE LIBRARY

Due to lack of use, the library will be closing permanently on April 1st. We would like to thank **Christina Bullen** for her valiant efforts to keep the library running and all the work she has put into the organisation and presentation.

We will be giving all the books away to anyone who wishes to collect them during April - then the remainder will be moved on to a charity.



01985 845303 leave message

www.maidenbradleyhall.co.uk

maidenbradleyhall@gmail.com

THE BRADLEY PANTRY VILLAGE GROCERY STORE & COFFEE SHOP OPEN 7 DAYS A WEEK

FRIENDLY SERVICE & GREAT QUALITY LOCAL & ARTISAN PRODUCTS
+ALL YOUR DAILY GROCERY NEEDS - WE SOURCE AS CLOSE AS POSSIBLE WITH THE BEST OF WEST COUNTRY PRODUCE - FOR YOU TO SHOP LOCAL

ASK AT THE COUNTER OR CALL THE TEAM ON **01985 541 479** FOR BREAD OR PASTY ORDERS

- ROUNDHILL COFFEE - EXTRACT TEA - GREAT CAKE CO - ANN'S CORNISH PASTIES -
LITTLE JACK HORNS SAUSAGE ROLLS - LANDRACE BAKERY - MILLY MOOS MILK -
HETTIE HENS SCOTCH EGGS - WESTCOMBE CHEDDAR & BRICKELLS ICE CREAM - WILD
FLOUR BAKERY - BUN IN THE OVEN - TAYLORS OF BRUTON - BATH CULTURE HOUSE -
WHITE HORSE HONEY - BINI FINE FOODS - CAVENDISH COOKS - STILL SISTERS -
- STEVE GUNTER & TONIA GUNSTONE ART -
& MANY MORE LOCAL & WEST COUNTRY DELIGHTS

INSIDE AND OUTSIDE SEATING - WELL BEHAVED DOGS WELCOME



OPENING HOURS

MONDAY TO FRIDAY & SATURDAY 0800-1800
SUNDAYS 1000 - 1600



PACKAGING CHALLENGES

At the end of 2023, the European Council of the European Union outlined a strategy for reducing packaging waste, which included introducing green packaging, deposit return schemes and reusable packaging. According to the council, the amount of packaging waste has increased by roughly 25% over the last decade and is expected to grow by another 19% by 2030 if no action is taken. It stated that each European citizen generated 190 kg of packaging waste in 2021. These are numbers that are not sustainable, which is why the council is trying to encourage use of more sustainable packaging.

WHY ARE TRADITIONAL PACKAGING METHODS SO BAD?

USE OF NON-BIODEGRADABLE MATERIALS – Much traditional food packaging, especially plastics, is non-biodegradable resulting in long-term pollution as materials can take hundreds of years to break down.

GREENHOUSE GAS EMISSIONS – Greenhouse gases are produced during the manufacture, distribution, and disposal of conventional food packaging materials, which contributes to climate change.

WASTE ACCUMULATION – Traditional packaging ends up as litter or in landfills in large quantities. This build-up adds to air, water, and land pollution.

RESOURCE-INTENSIVE PRODUCTION – Traditional packaging materials are often produced using fossil fuels and significant quantities of water depleting our resources.

LIMITED RECYCLING OPTIONS – Not all traditional packaging materials are recyclable, and even when they are, low recycling rates and inefficiencies in the recycling process can limit the effectiveness of this as a solution.

IMPACT ON LIVING ORGANISMS – Plastics harm ecosystems animals that are exposed to them. Micro-plastics have been found in human blood, saliva, liver, kidneys, and placenta (Harvard Medicine Magazine, Spring 2023).

TYPES OF GREEN PACKAGING

BIODEGRADABLE PACKAGING

Over time, this kind of packaging can break down organically. It does not need to decompose within a certain amount of time in order to be considered biodegradable. The fact that biodegradable packaging doesn't leave behind dangerous pollutants is one of its main advantages but there are also disadvantages if it finds itself in the wrong environment.

RECYCLABLE PACKAGING

Recyclable packaging refers to packaging materials that can be collected, processed, and remanufactured into new products after they have been used. This process diverts waste from landfills, conserves resources, and reduces environmental impact but the inefficiencies mentioned above render this a far from perfect solution. Recent studies have revealed that one destination for this at recycling centres 'Energy From Waste' ie. burning of this kind of waste for energy the releases an completely unsustainable quantity CO2 into the atmosphere.

REUSABLE PACKAGING

Reusable packaging refers to packaging solutions designed for multiple uses, as opposed to single-use packaging. This type of packaging is an integral part of sustainable practices, aiming to reduce waste and environmental impact. Examples of reusable packaging include reusable bags, refillable containers, reusable coffee cups and reusable lunch boxes. Our milk station and refill stations at the shop are wonderful promoters of this approach that encourages a thoroughly sustainable mindset.

ECO-FRIENDLY PACKAGING

This type of packaging refers to packaging which is recyclable, made from recycled materials, doesn't contain pollutants which could harm the environment or customer and sources, transports and produces the materials using renewable energy. It is a rather vague term that can be over-used and mask environmental impacts in the supply chain.

THE USE OF BIODEGRADABLE MATERIALS IN GREEN PACKAGING

In the quest for environmental sustainability, biodegradable materials are leading a significant transformation in the packaging industry. Unlike conventional packaging that lingers in landfills for centuries, biodegradable options offer a promising solution by decomposing naturally and reducing ecological footprints. Biodegradable packaging is derived from natural materials; plants, paper, and bioplastics. These are designed to break down efficiently under natural conditions, facilitated by microorganisms, humidity, and sunlight.

TYPES OF BIODEGRADABLE PACKAGING

BIOPLASTICS

Bioplastics have a very similar appearance, feel, and functionality to regular plastics because they are made from sugars that are extracted from corn and sugarcane. When this material reaches the end of its life cycle, carbon dioxide and water can break it down.

STARCH-BASED PACKAGING

This includes materials used in packaging that are made from different types of natural starches, like tapioca, potato starch, or cornflour. These materials

frequently take the place of conventional polystyrene foam peanuts in loose-fill packaging.

MUSHROOM PACKAGING

Mycelium, the root structure of mushrooms, is cultivated around agricultural waste to create this innovative material. It serves as a sustainable substitute for plastic and Styrofoam in cushioning and insulation applications.

CELLULOSE PACKAGING

Cellulose is a thin, translucent and fully biodegradable film or sheet which derives from wood pulp and other plant fibres. It is often used for transparent films or bags.

PAPER

Cellulose fibres, which are mostly derived from wood, a naturally occurring and renewable resource, are used to make paper. Paper's organic origins make it susceptible to degradation by ambient microorganisms. It is a common substitute for plastics in modern packaging.

WHAT CAN WE DO TO HELP?

Be more aware of what we use and generally select non wrapped products to buy. Less is the answer rather than different as so many of the green packaging processes have drawbacks.

With enough of the right choice from consumers pressure is exerted on producers to use less packaging, especially if we **articulate** this choice by speaking about it when possible.

Take care when recycling to put the right things in the right boxes. This is not a simple job and we will look at this in more detail later this year here.

Reuse as much as possible, if you have plastic bags reuse them as many times as you can before letting them go.

Refill, get into the habit of taking containers to be filled, there are many local places (including our very own wonderful Bradley Pantry and Milk Station) that offers refill for products. Butchers will often put your purchases into a box that you bring along. Others locally are Sprout and Flower in Mere, Frome Wholefoods and Denude in Frome.

Use paper based tapes when packing things eg. to post ourselves.

Carry a cup for your on the hoof coffee/tea. More sustainable than the paper or biodegradable one on offer.

LOVE HEART JAM TARTS

INGREDIENTS:

150g Plain flour
100g Butter
50g Sugar
Jam of your choice

**ALL INGREDIENTS CAN BE BOUGHT AT THE
BRADLEY PANTRY.**

INSTRUCTIONS:

- 1.Heat the oven 170C/150C fan/gas 3. Put the flour, butter and sugar into a mixing bowl.
- 2.Use your hands to combine the ingredients until the mixture looks like bread-crumbs, then squeeze until it comes together as a dough.
- 3.On a lightly floured surface, use a rolling pin to roll out the dough to ½ cm thick.
- 4.Use heart-shaped cutters to cut the dough, put half the hearts to one side. Use smaller heart cutters to cut the centre of the hearts to make an outline.



5.Layer the hearts together with the full heart at the bottom and the heart outline on top. You can make the bottom hearts slightly wet to help stick the layers together.

6.Place on a lined baking tray and fill the centre with jam. Bake for 15-20 mins until golden brown.

7.Remove the shortbread hearts from the oven and leave to cool on the tray for 10 mins.

*Rosie Brown
Poppy Phillips*



MAIDEN BRADLEY COMMUNITY GARDEN

Help us to nurture our community garden and create a beautiful, sustainable space for wildlife to thrive and everyone to enjoy .



COME AND JOIN US

Become a member and transform your wellbeing and the environment for the better.

- All ages welcome**
- No skill needed**
- Tools and seeds provided**
- Eat what we grow**

Grow organic fruit, veg and flowers

Enjoy our beautiful, outdoor haven

For more information contact sam.ribeck@btinternet.com

A January wassail in the community garden,
with a poem,
and spiced cider,
to ward off the seasonal chill.
Apple cake,
A bonfire,
and ribbons tied to branches of an apple tree.
With wishes,
And hopes
For a good apple year.
Tonia Gunstone



Unit J11 Jenson Avenue, Commerce Park, Frome, BA11 2FQ
01373 463866 | Mon-Sat 9-5 | allsopcarpets.co.uk



LINK NUMBER 22 - NICI HARRISON

HOW LONG HAVE YOU LIVED IN MAIDEN BRADLEY?

Charlie and I moved here in August last year. Before that, we were living down the road in Yarnfield, but we had a year living in Cornwall in between. It feels like coming home to be back on these lands.

TELL US SOMETHING ABOUT AN ANIMAL THAT MEANS A LOT TO YOU

Our beloved dog Willow is my whole heart! When he had just turned two, he was diagnosed with an aggressive cancer without treatment options and was given just a few months to live, but more than two years on, he's happy and healthy - my miracle baby. He is a mix of greyhound, collie, and whippet. Sometimes he can be very anxious and has a loud bark, so I'm sorry if he ever barks at you in the village – he's a softie really.

TELL US SOMETHING OF YOUR WORK

For the past six years, I've been holding grief circles, rituals, and retreats. I've been fortunate to learn from incredible teachers about the healing and transformation that happens when we come together in community to welcome and honour loss - whether individual or collective. What started as a personal exploration and enquiry is now my full-time business - The Grief Space.

WHAT IS THE BEST BOOK YOU HAVE READ AND WHY?

I absolutely love reading and will often have two or three books on the go. Recently, I loved *Demon Copperhead*. Anything written by Barbara Kingsolver is beautiful, but this retelling of Dickens' *David Copperfield* stuck with me as starkly real and what it means to become the hero of your own life. It is great that Maiden Bradley has a book club.

TELL US SOMETHING YOU LIKE ABOUT THE VILLAGE?

I love being able to walk to various different forests, and I have a few specific trees that I like to visit and curl up under. I am also so grateful to the Bradley Pantry; having a village shop that's so welcoming, warm, and deliciously stocked is such a gift.

TELL US ABOUT A HIGHLIGHT IN YOUR LIFE

It might sound a bit twee, but genuinely moving here to Maiden Bradley has been a huge highlight. In many ways, I've had quite an unsettled decade, and so putting down roots and building a home is fast becoming a beautiful turning point and joy in my life. Charlie and I are also getting married later this year in a temperate-rainforest in Cornwall, so perhaps that will take the top spot soon.

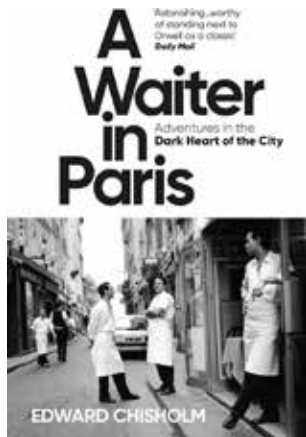
WHAT'S YOUR FAVOURITE SEASON?

Without a doubt, Autumn - I love the burnt orange, mossy green, and mustard yellow colours.

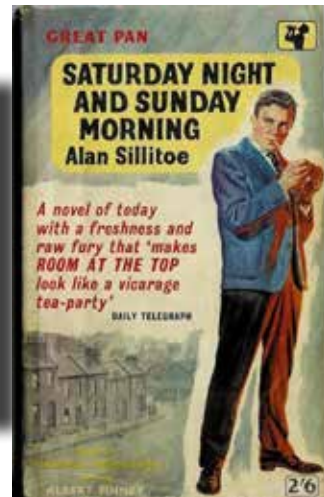
TELL US A BIT ABOUT HOW YOU FEEL ABOUT THE FUTURE.

This is a huge question, but something that I spend a lot of time thinking about. In many ways, I think we're headed for a lot of collective difficulty as our ecological crisis accelerates and social injustices become even more apparent. But there are lots of things that give me hope - community, simple ways of living, regenerative farming, emotional healing spaces, activism, grief circles, and collective prayer.





Village Book Group



Anybody who has ever worked, or is working in hospitality will flinch slightly at the book we discussed this month at the Village Book Group!

A Waiter in Paris by Edward Chisholm is a gritty account of the author's experience as a would be waiter in Paris around 2011. The vivid descriptions of a world of inhuman hours, snatched sleep, scraping by on coffee and bread and low wages whilst dealing with the public made us slightly wary of eating in some Paris restaurants!

Most people in the Book Group enjoyed the book, agreeing it was a compelling read, well written, some thought it was derivative and one thought it was 'poor porn'.

We all found it prompted lively discussion reminding some of us of youthful waitressing experiences.

As ever, we spent some of the evening just catching up with other members by a very warm fire.

Next month's choice of book is 'Saturday Night & Sunday Morning' by Alan Sillitoe.

We welcome new members - contact Jessica 844174 for info.

Esther Swan



Rural Business Services was established in 1997 to provide professional book-keeping and administration services for small to medium sized rural based businesses. In addition we offer first class Project Management, sound sensible Business Administration & Financial Solutions together with Broad Level Financial Management Experience. No matter how small or big your requirement is we can tailor support to suit your business needs either on or off site.

**For more information or to discuss your requirements
contact: Lucinda Stokes on 01985 844017
email: lucinda@rurallaffairs.co.uk**

HORNINGSHAM LUNCHEON CLUB

Our Christmas was made complete with the children from Horningsham School singing to us at our last lunch in the Hall. The children sang carols which we could join in with and some songs, the most popular 'the sheep, sheep song' which was new to us all and beautifully sung. We thank them all for really making our Christmas.

The following week members of Luncheon club and Welcome club met at Hunters Lodge for our Christmas meal. Sixty of us sat down at our festively decorated tables for a very enjoyable main course and the pudding of our choice. This is an opportunity to include all our cooks and helpers who keep the luncheon club running throughout the year. Our thoughts were with Kim, one of our long-standing cooks who was in hospital, and we had sent our best wishes for a speedy recovery.

Thanks, and vouchers or wine were given to Fran, our chief helper who keeps us all in check and to Jean, Colin and Carole who are there every week laying up the tables, serving the meals and washing up in the kitchen, to Pearl, our treasurer and Tom and Mary who organize the raffle each week. Vouchers and thanks from the members were given to Margaret and Lesley for their work throughout the year. A large raffle was organized by Tom and prizes were given to the lucky recipients. It was a very festive day enjoyed by everyone.

We started 2025 back at Horningsham Hall in the snow on 9th January. After a meeting in December, it was decided that due to the increase in ingredients etc. the price should rise to £5 per lunch. This is still a very good price for a cooked dinner, pudding and tea or coffee. New members over 60 are always welcome. An annual membership subscription of £5 is collected each April. We are open every Thursday at 12 noon for lunch at 12.30. Closing the whole of August and for two weeks at Christmas and Easter. We are very lucky to have a pool of cooks and helpers. A rota is drawn up each term by Margaret after she has contacted all the cooks and helpers for their available dates. If you are interested in joining as a member, helper or cook please contact either of the phone numbers below. You will be made very welcome.



Lesley Trollope
01985 211355

Margaret Long
01985 844756



UPDATE FROM MBWW – HGV WEIGHT LIMIT CAMPAIGN

Our next meeting with Wiltshire Council is in early February where we will discuss next steps regarding the weight limit on the B3092, and we will give an update at that time. In the meantime, our campaign group that brings together residents from Corsley, Chapmanslade, and Maiden Bradley, as well as Norton Ferris and Kingston Deverill, has met to prepare, and also to discuss our response to the new Local Transport Plan 4. This plan sets out Wiltshire Council's strategic objectives for transport, and it includes a freight strategy. Our submission to the consultation is below.

Submission by the three villages to the consultation on the LTP4

The three villages weight limit campaign group (Corsley, Chapmanslade and Maiden Bradley) welcomes the publication of the draft Local Transport Plan 4.

We are pleased to see the LTP4 recognise the problems that freight causes on rural roads, noting air and noise pollution, and impacts on health and wellbeing. We also welcome the commitment to safer and appropriate freight routes, with rest stops for drivers and appropriate signage. We are glad to see the council will continue to apply weight limits as a tool to manage freight impacts.

We note with some concern that freight is responsible for a large proportion of carbon emissions in Wiltshire and that the majority of the freight fleet in Wiltshire is diesel. We hope that the LTP4 will be clear that meeting carbon emissions reduction targets cannot be used as a justification for freight to take short-cuts through our villages. We cannot be asked to bear the burden of their failure to shift to renewable fuels.

We also note that there may be revisions to the primary and secondary designated freight routes in Wiltshire, and we assume this will result in moving freight onto appropriate main roads and will not be used in any way to justify freight lorries driving through our rural villages.

We repeat that from our perspective, in Maiden Bradley, Corsley and Chapmanslade, the single most important step that Wiltshire Council can take to improve our local wellbeing and health, and to improve our access to alternative forms of travel, is to stop freight lorries on our rural roads.

Regards

THREE VILLAGES CAMPAIGN FOR WEIGHT LIMITS

Corsley (A362),

Chapmanslade (A3098),

Maiden Bradley (B3092)



**HEATING, PLUMBING &
PROPERTY MAINTENANCE**
CONTACT JASON OR LOU ON
01373 832866 / 07827 454844
Email: jlknight23@yahoo.com
OIL SERVICING & INSTALLATION,
PRESSURISED SYSTEMS,
UNVENTED HOT WATER &
GENERAL PLUMBING
WITH 30 YEARS EXPERIENCE

E G MARTIN LTD
for all your
Central Heating Oil
01373 822784
enquiries@egmartin.co.uk
**your local central heating
fuel distributor**

WHAT'S IMPORTANT TO YOU IS IMPORTANT TO US

At NFU Mutual we can look after you, your family and your business.

Our insurance products and financial planning services include:

- Home
- Car
- Business
- Farm
- Equine
- Travel
- Income Protection
- Investments
- Pensions

NFU Mutual Financial Advisers advise on NFU Mutual products and selected products from specialist providers. When you get in touch we'll explain the advice services offered and the charges. Financial advice is provided by NFU Mutual Select Investments Limited.

For a real conversation about your needs call us or pop in
Perry Farm Offices, Maiden Bradley, Warminster, BA12 7JD
Tel: 01985 845116



 **NFU Mutual**
INSURANCE | PENSIONS | INVESTMENTS

S J Weeks & R L Maddocks is an appointed representative of The National Farmers Union Mutual Insurance Society Limited (No. 111982). And an introducer to NFU Mutual Select Investments Limited, a member of the NFU Mutual group of companies.

WILTSHIRE COUNCIL'S ADDITIONAL £22M INVESTMENT IN OUR ROADS

As your Wiltshire Councillor I am most often asked about our roads – so I thought it might be helpful to write about Wiltshire Council's investment in our roads, and how it prioritises spending.

Wiltshire Council is focused on efficient and effective financial management – with prevention and early intervention in all service areas from adults and children's services to roads. An extra £22m has been invested into Wiltshire's highways - on top of the £20.7m received from the Government - and it is making a difference on the county's roads, with more resurfacing, more repairs and fewer potholes.

Highways expenditure and performance is scrutinised intensely – including by the Environment Select Committee at its meeting on 14 January. All Highways investment follows an evidence-led, risk-based approach – i.e. the inspection regime determines the risk to motorists and residents. Residents may be interested to read more at Agenda - Democratic Services - Wiltshire Council Item 7.

The Inspection Manual and the planned Highways Maintenance Programme by Area Board are on the Wiltshire Council website at Highways maintenance - Wiltshire Council. I'm pleased that the Warminster Area Board maintenance plan includes Chapmanslade – Thoulstone A36 on/off slips) and Huntenhull Green (2025/6, also in Maiden Bradley - Bradley Lane to Deer Common Junction (2026/7) Smaller target sites most prone to potholes are repaired through a package of road resurfacing and localised repairs using new machines called Bobcats. These remove and replace large patches of road in a matter of minutes, before moving straight on to the next job. Areas are identified through analysis of customer reports, pothole repairs and local knowledge of areas of concern from the Local Highways Area Engineers. Special consideration will be given to C road and Unclassified roads so please do use the My Wilts app to report any local issues.

Much of the additional investment would not be possible without the Council's careful financial management to free up additional funds for these priorities, and of course significant hard work by Highways Officers to manage the programmes and contractors.

But there is much more to be done, as we continue to invest significant sums into filling and preventing potholes, replacing and extending the life of our road surfaces, preventing flooding, replacing road signs and reinstating and painting new road markings.

I will continue to keep you updated on the Highways Investment plans and programmes as more becomes available.

Bill Parks

Wiltshire Councillor for Warminster North and Rural.
Tel: 07712 490075 Email: bill.parks@wiltshire.gov.uk



COMMUNITY SPEED WATCH NEWS

Police Community Volunteers working on behalf of
the Wiltshire Police and Maiden Bradley



HELLO VILLAGE WE ARE BACK!!!

Having had our winter break WE ARE BACK As is our usual practice we stood down over the Christmas period. We recommenced activity Monday 6th January 2025.



CHURCH STREET



During the Christmas break it came back to the SCW team that some thought perhaps we were not doing our jobs properly, this we think is a very unfair comment indeed as we are all volunteers and give of our time freely to keep the village safe as we can within our remit. So if someone feels they have a constructive comment to make please do so, we would be delighted to discuss the matter with the team and hopefully improve our activity. Or better still come and join the team and help improve our activity.

COME AND JOIN US TO FIND OUT. YOU WOULD BE VERY WELCOME.

This month the average vehicle count remained the same. However the important point is that it continues to have a very positive effect on those travelling in excess of 20 or 30 mph, the number in excess of the speed limit continues to drop, so CSW is having a positive effect.

Simon Wager

Community Speed Watch Co-ordinator.
Chairman Maiden Bradley Parish Council
Telephone No 01985 844848 Mobile 07721 362828



ILES & VINCENT FUNERAL SERVICES

WARMINSTER'S ONLY INDEPENDENT FUNERAL DIRECTOR

Classic and traditional funeral ceremony, small and intimate service or no service at all with a direct cremation, we are here to help, guide and support you every step of the way with sensitivity, experience and empathy.

- Over 2 decades of experience
- 24 hr funeral service in & around Warminster
 - Tailor made funeral services
- Advice & help on all aspects of the service
 - Funeral Plans

The Cornmarket, Warminster BA12 9BX
01985 220161 (24 Hours)
info@ilesandvincentfuneralservices.co.uk

Iles & Vincent Funeral Services,
a family focused, caring and approachable
funeral directors run by
Anna Iles and Beverley Vincent.



MERE AND DISTRICT LINK SCHEME

Charity Registration 1062328

www.merelink.org.uk

"MERE AND DISTRICT LINK SCHEME"



Please call 01747 860096 to book a driver or to volunteer as a Link driver.

As a charity we do not charge for trips but ask for a donation.

Please do remember that our coordinators work from their own homes – we do not have an office - so please keep calls to 9-5 Monday to Friday and only use the 01747 860096 number.

With the Christmas and New Year holidays now in the distant past we are happy to confirm that the Link will continue to take people to medical appointments as required

Please note it is important that you give as much time as possible If you have a medical appointment to give us the best chance of booking you a driver.

John FitzGerald - Link Chair

01747 860867 or 07795606426

Link phone 01747 860096

Bed & Breakfast
And
Self Catering Cottage



Margaret & Stephen Crossman

Mill Farm
Water Lane
Horningsham
Warminster
Wilts

01985 844333

millfarmhorningsham@hotmail.com

www.millfarmhorningsham.co.uk



ANDY'S WINDOWS & BRUSH STROKES

Professional
Experienced
Reliable

LOCAL WINDOW CLEANING & DECORATING SERVICE

- External and internal windows cleaned - domestic and commercial
- PVC, soffit and fascia cleaning
- Gutter clearing and cleaning
- Painting and decorating services - inside and out

FOR A FREE QUOTE WITH NO OBLIGATION CONTACT:

Andy Cook

07944 280490

andyswindowsfrome@gmail.com



Tailored Lettings &
Property Management
Residential Sales

Mere - 01747 356176

Maiden Bradley - 01985 844972

Anne Freeman

Local, Reputable, Honest & Approachable

Free No Obligation Valuations

amuletresidential@gmail.com

Find us on Facebook

www.onthemarket.com



JT LANDSCAPING

Patio Fencing - Retaining Walls
Sheds and Shed Bases

Garden Walls

Turfing - Ponds - Pathways
all aspects of Landscaping

LOCAL - RELIABLE
COMPETITIVE PRICES
FREE QUOTATION

07701 362623

LIFE ON THE FARM

FEBRUARY 2025

ACTIVITIES THIS MONTH?

General Maintenance of machinery and equipment

Hedging, ditch and drainage clearance, tree planting, Footpaths and gateways maintenance

LIVESTOCK

Sheep brought in for shelter against inclement weather and pregnancy scanning and preparation for lambing continues feed sugar beet and sheep nuts and Hay

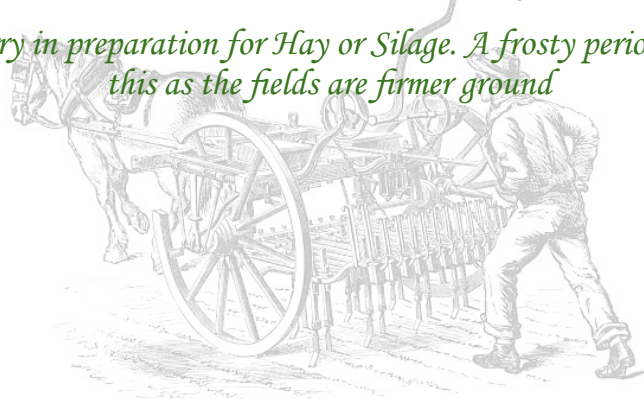
The Lambing season generally starts in November through to May peaking around February March

Weaning calves continues for livestock markets in July

Inspect all the pastures that stock will be turned out to see that they are safe and secure

FIELD PREPARATION, FOR SPRING SOWING

Spread slurry in preparation for Hay or Silage. A frosty period is ideal for this as the fields are firmer ground



DOMESTIC ABUSE.
You are not alone.

 Wiltshire and Swindon
pcc



National Domestic Abuse Helpline: 0808 2000 247

Wiltshire Police: 999 in an emergency, 101 for all non-emergencies

FearFree (Wiltshire): 01225 775 276

Paragon (Swindon): 01793 610 610

THE
BRADLEY
HARE

OPEN 7 DAYS A WEEK

LUNCH
FRIDAY TO SUNDAY

DINNER
MONDAY TO SUNDAY

BOOK ONLINE