



MAIDEN BRADLEY NEWS

DECEMBER 2024

ELAINE AND KEITH CELEBRATE
AN EARLY CHRISTMAS PRESENT
FOR THE MEMORIAL HALL

SEE INSIDE

Sunday 1st 10:00 Parish Communion Saint George's, Bourton

Monday 2nd 7 FOR 7.30 START - CHRISTMAS BINGO IN THE HALL



Wednesday 4th Household waste collection

Saturday 7th 2:00 - 5:00 CHRISTMAS FAYRE IN THE HALL



Sunday 8th 10:00 Morning Worship All Saints, Maiden Bradley

Monday 9th Garden waste collection

Wednesday 11th Blue bin and black box collection

Sunday 15th 10:00 Parish Communion, Saint Peter's Stourton

Wednesday 18th Household waste collection

Friday 20th COPY DEADLINE FOR NEWS editormaidenbradleynews@gmail.com

Sunday 22nd 10:00 CHRISTMAS CAROL SERVICE,

ALL SAINTS, MAIDEN BRADLEY



Monday 23rd Garden waste collection

TUESDAY 24TH CHRISTMAS EVE

22:00 Midnight Eucharist All Saints, Maiden Bradley

WEDNESDAY 25TH CHRISTMAS DAY

10:00 Morning Worship, Saint George's, Bourton

Friday 27th Blue bin and black box collection

Sunday 29th 10:00 Benefice Communion, Saint Martin's, Zeals

Friday 3rd JANUARY Household waste collection

Please note that the lane up to the Old Timber Yard is going to be re tarmaced on 9th January. Please make sue that you have moved your car if you need to use it that day as access is going to be, at times, restricted.

BUS SERVICES FROM THE BUS STOP BY THE KNAPP
FROME - WEDNESDAYS DEPART 9.53AM RETURN 13.50
WARMINSTER - FRIDAYS DEPART 9.35AM RETURN 12.30

REGULAR EVENTS IN THE HALL

| | | |
|------------|-----------------|---------------------|
| MONDAYS | 9.30AM-10.30AM | PILATES |
| MONDAYS | 10.45AM-11.30AM | CHAIR PILATES |
| MONDAYS | 5.00PM-6.00PM | DR'S SURGERY |
| TUESDAYS | 9.30AM-10.30AM | BRADLEY BABES |
| TUESDAYS | 1.00PM-3.00PM | POST OFFICE SERVICE |
| WEDNESDAYS | 10.00AM-11.15AM | SILVER SNEAKERS |
| THURSDAYS | 9.30AM-10.30AM | PILATES |
| FRIDAYS | 10AM-12NOON | COFFEE MORNING |

BOOK LIBRARY AVAILABLE DURING HALL OPENING FRIDAY MORNINGS

VILLAGE AND SCHOOL CAROLS

| | |
|-------------------------|---|
| Monday 16th at 14.30 | Whitesheet School (in Saint Martin's Church, Zeals) |
| Wednesday 18th at 18.00 | Kilminster War Memorial |
| Thursday 19th at 18.00 | Saint George's School (in Saint George's Church, Bourton) |
| Friday 20th at 18.30 | Zeals Village Green |
| Sunday 22nd at 18.00 | Breach Close Green, Bourton |

MAGAZINE AVAILABLE ONLINE ON THE VILLAGE WEBSITE:
WWW.MAIDENBRADLEYVILLAGE.ORG.UK

USEFUL TELEPHONE NUMBERS

| | | |
|--|--|--|
| Speed Watch Co-ordinator | Simon Wager | simon.m.wager@gmail.com |
| Neighbourhood Watch Co-ordinator | Derek Stevens | 01985 844428 |
| Community Garden | Sam Ribeck | sam.ribeck@btinternet.com |
| Book Club | Jessica Johnson | 01985 844174 |
| Cookery Demonstrations | Rosie Brown | 01985 844236 |
| Luncheon Club | Margaret | 01985 844756 |
| Welcome Club Outings | Pearl | 01985 219289 |
| Memorial Hall bookings | bookingsmaidensbradleyhall@gmail.com | 01985 845303 |
| Dr Andrew Murrison MP | murrisona@parliament.uk | 01225 358584 |
| Bill Parks (Wiltshire Cllr) | bill.parks@wiltshire.gov.uk | 07712 490075 |
| Mere Link Scheme | | 01747 860096 |
| Bell Ringing Tuesday 7.30pm in the Church Bell Tower - beginners welcome | | 01985 845397 |
| Church contact | Diana Bourne | 07775 625448 |
| Environmental issues | greenermaidensbradley@gmail.com | |
| Nadder Oil Buying Club | Email:richard.willan@me.com | www.oilbuyingclub.com |

EDITORIAL

Christmas is a time when we love to celebrate, to drive away the cold, dark days that arise at this time of year. As the winter solstice approaches on 21st December, we can enjoy the fact that the days are getting longer and that we are coming out of the bottom of the seasonal trough. After the solstice, we have the fun of Christmas; walks over frosty fields, repeats of old films on the telly, houses festooned in crazy lights, events in the village - Christmas Fayre 7th – Santa arriving at the village shop on 21st, seeing family and friends, but for me, one of the greatest enjoyments is the food. To get us all in the Christmas spirit, I thought I would share with you a super easy recipe that is a great accompaniment to a Christmas tippie but can be put together in 20 minutes– it's a winner, so I hope you all enjoy it. The name came about last year when I made these to give to friends and our dog had just been castrated!

FEARGAL'S SPICY NUTS

Ingredients:

400g mixed nuts
1 tbsp sunflower oil
1 tbsp clear honey
2 tsp sea salt
½ tsp smoked paprika
2 tsp thyme leaves (optional)

For the spice mix:

1 tbsp light muscovado sugar
1 tsp ground cumin
½ tsp ground coriander
¼ tsp chilli powder

- Preheat oven to 180, 160 fan, gas 4. Mix the ingredients for the spice mix, set aside.
- Line a baking tray with baking paper, pour in the nuts and add the oil and mix till they are covered. Sprinkle over the spice mix and mix till the nuts are covered. Bake for 15 mins, till golden and fragrant, stirring halfway through the cooking time. Remove from the oven and drizzle over the honey, then stir and return to the oven for 5 mins.
- Remove nuts from the oven, toss with the salt, smoked paprika and thyme if using. Serve warm or cold

I hope that you all have a wonderful Christmas and a healthy and happy New Year.

Warmest wishes

Gilly (and Feargal!)



PLEASE SUBMIT ALL ARTICLES FOR INCLUSION IN THE NEWS BY THE
20TH OF EACH MONTH BY EMAIL TO:
editormaidenbradleynews@gmail.com

Bed & Breakfast And Self Catering Cottage



Margaret & Stephen Crossman

Mill Farm
Water Lane
Horningsham
Warminster
Wilts

01985 844333

millfarmhorningsham@hotmail.com
www.millfarmhorningsham.co.uk



ANDY'S WINDOWS & BRUSH STROKES

Professional
Experienced
Reliable

LOCAL WINDOW CLEANING
& DECORATING SERVICE

- External and internal windows cleaned - domestic and commercial
- PVC, soffit and fascia cleaning
- Gutter clearing and cleaning
- Painting and decorating services - inside and out

FOR A FREE QUOTE WITH NO OBLIGATION CONTACT:

Andy Cook
07944 280490

andyswindowsfrome@gmail.com



Tailored Lettings &
Property Management
Residential Sales

Mere - 01747 356176

Maiden Bradley - 01985 844972

Anne Freeman

Local, Reputable, Honest & Approachable
Free No Obligation Valuations
amuletresidential@gmail.com

Find us on Facebook
www.onthemarket.com



JT LANDSCAPING

Patio Fencing - Retaining Walls
Sheds and Shed Bases

Garden Walls

Turfing - Ponds - Pathways
all aspects of Landscaping

LOCAL - RELIABLE
COMPETITIVE PRICES
FREE QUOTATION

07701 362623

FAMILY NEWS



Vera Crossman celebrates her 90th with friends and family



LUNCHEON CLUB NEWS

Luncheon club has lost one of our senior members with the death of Chrissy Buttery. She was a long-standing member and treasurer for many years. When she became unable to attend the club, a meal was delivered to her each week and she kept up to date with all the current club news. Sadly, she became very ill and was in and out of hospital but died as she wanted in her home in Horningsham. Our condolences to her brother and family.

We have also had a happy celebration this month. Vera Crossman a member and one of the original cooks when the club was started over forty years ago celebrated her 90th birthday on Thursday 24th. As a surprise her family of Steve, Peter and Jackie plus partners sat down to have lunch with us. They also kindly provided prosecco for everyone to enjoy. The cake from the club was cut by Vera and a toast raised to congratulate her on this milestone birthday and thanks from all the members to her family for making the day so special. We also sang Happy Birthday to Geoff Owen whose 82nd birthday was the same day.

We will be holding a short meeting after luncheon club on Thursday 5th December to discuss any increase in 2025 for the cost of lunches.

Margaret Long and Lesley Trollope

THOUGHTS FROM THE RECTORY....

WHAT WILL WE BE CELEBRATING?

I remember once reading in the *Church Times* some advice (I assume that it was light-hearted) aimed at helping clergy 'survive' the festive season. In responding to the comment, "It's your busy time, vicar" it was suggested that clergy could do nothing more than smile weakly!

Well, despite such sentiments, I enjoy Christmas. In fact, I would go further and say that I love Christmas. Yet that doesn't mean that there aren't times when I am left rather confused, and wondering what all the fuss is about. Let me explain.

As I sit writing this article, the long wet summer is still fresh in my mind. Yet even before Autumn began I had become aware of the so-called 'essentials' of Christmas that were beginning to litter supermarkets and shops (even Christmas mince pies that had to be eaten by the end of October!!!!), making it increasingly difficult to find the things I actually needed — you know the situation: you ask an assistant the whereabouts of something, only be told that it has been removed to make way for Christmas stock.

Where, however, is Christmas to be found among such things as fluffy penguins (I trained as a biologist, so I know that penguins don't have fur!), singing fir trees, and dancing elves? Hunt as I may, I just can't find it. Therefore, I am left feeling bemused.

If I give you a few clues, however, then could you be kind enough to help me in my search? As far as I remember, the real Christmas is the occasion when Christians celebrate the birth of a child in Bethlehem. The child's parents named him Jesus, and the message announcing his birth hailed him as God's Son and the Prince of Peace. Some shepherds claimed that angels had visited them too, telling them that Jesus was "good news for all people . . . a Saviour . . . the Messiah, the Lord" — and I can't help wondering if it was the lack of distractions that brought those shepherds to this realisation.

Rumour has it that churches are the places where we can experience the authentic Christmas celebration, but for some reason they don't make much fuss about it until the latter part of December. Then, perhaps that's the point!

So, I'll be there to experience a real Christmas. Will you?

Graham Southgate (Rector)



Maiden Bradley Memorial Hall

Champagne corks popped at the November committee meeting of the Memorial Hall - we certainly had something to celebrate!

Our fundraising efforts were rewarded quite unexpectedly with the allocation of a grant from the Government's Levelling Up fund for just over £22,000. This means that, added to our other two grants and the amount we had already raised towards the project, we exceeded our total required to replace all 4 of the main windows - to almost £50,000!!

I will not deny that the amount of work put towards obtaining the grants was quite time consuming - but now we are on the other side of it, we are all just looking forward to the work being completed in February 2025 and enjoying the benefits to our heating and maintenance bills that it will bring.

Elaine Lavender (Treasurer MBMH)

A HUGE AND HEARTFELT **THANK YOU** TO ALL THOSE INDIVIDUALS AND ORGANISATIONS WHO HAVE SUPPORTED US.

The
Future Smiths



Funded by
UK Government

The UK Shared Prosperity Fund (UKSPF) and Rural Prosperity Funds are part of the Government's Levelling Up agenda, providing £2.6bn of funding for local investment across the UK from 2022 until March 2025. Wiltshire has been allocated £5.7m from UKSPF and a further £2.5m through the Rural Prosperity Funds.



WE ARE RAPIDLY APPROACHING OUR ANNUAL CHRISTMAS FAYRE

Even at this late stage, we are looking for donations of raffle prize and tombola items. We are also excited to announce an additional stall this year that is a bit different to the ones we usually have, offering a selection of nearly-new clothing and accessories. If you don't find something for yourself, we feel confident you'll find a gift for somebody on your Christmas list!

For all those who are kindly donating cakes, bakes, preserves, etc, please note that the Hall will be open from 10am on the morning of the Fayre to prepare the stalls and receive all those delicious goodies. We also look forward to receiving lovingly prepared donations from some of our younger budding bakers!

One last thing: we would be very grateful if you could bring cash on the day to spend but we do have a card reader if you don't make it to the bank on time!

We are really looking forward to greeting you all and hope you have a very enjoyable afternoon.

Keith Appleton (Chairman)



01985 845303 leave message
www.maidenbradleyhall.co.uk
maidenbradleyhall@gmail.com

CHURCH CHRISTMAS DECORATIONS

If you would like to come along to church on Dec 21st to join the decorators team, it would be lovely to see you. We gather from 10am onwards. If you have holly, ivy or other greenery from hedgerows etc please bring that along too. I will set up the window sills so that they are "ready to go" for you.

Remember to bring your secateurs!

We will leave the lower branches of the big Christmas tree for the children to decorate if they would like to lend a hand too.

If you would like to help but cannot manage Saturday, let me know of the time you would like to do yours .

Sue Priestner 844244





WHAT SAYS CHRISTMAS MORE THAN A CHRISTMAS TREE??

Presents.. Snow.. Nativity.. Family.. Christmas lights.. Turkey.. ok OK, can I continue..?
So smarty pants, do you know how to tell the different Christmas trees apart? Well not Christmas trees exactly but conifer trees, that is to say, spruce, fir, pine amongst others. Conifer trees were amongst the first trees to evolve some 350 million years ago, they are gymnosperms, translating as 'naked seed' meaning that their seed is not covered by an ovary (otherwise known as the fruit) like the flowering trees known as angiosperms that evolved much later, more like 125 million years ago.
Sure, sure, but how do I tell my fir, from my spruce or pine tree? They all look the same! Or do they? Look a little closer and there are some ways to tell them apart.
The first thing to look for is whether they have needles or scales? If they have needles they will be either a pine, fir, spruce, larch, cedars or juniper.
If they have scales as leaves, they will be a cypress. Some cypress such as the swamp cypress have leaves but are deciduous so drop these in winter.

PINE:

*Needles are soft to touch and joined at the base in 2s (our native Scott's Pine) 3s or 5s and tend to be longer than other conifers.
Cones hang towards the ground.
Branches tend to be upturned and grow from a ring on the trunk
Tree shape is roughly triangular*

SPRUCE:

*Needles are short and stiff and grow individually from the trunk and branches and are attached with a small woody stalk. The needles are squares so roll easily in the fingers.
Cones hang towards the ground.
Branches tend to be upturned.
Tree shape is that of a typical Christmas tree.*

FIR:

*Needles are soft and flat, grow individually from the trunk and branches but are attached with a small suction cup.
Cones grow upwards from the branch.
Branches grow more downturned and have wide lower branches.
Tree is also the shape of a Christmas tree but with more space between the branches.*

CEDAR:

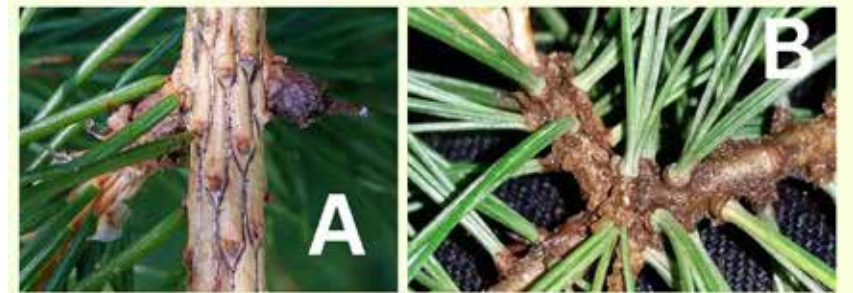
*Needles are short and cluster around the twigs all year round.
Cones are barrel shaped with a flat top, papery and grow upwards from the branch.
Branches grow in a spiral from a single trunk. Generally Atlas Cedars have upward pointing tips, Deodar's point downwards and those of the Cedar of Lebanon are flat.
Western red cedar are also tall and majestic trees but with red bark and fern like foliage.*

LARCH have no needles in winter as they are deciduous and grow in dense clusters in summer.

So now we are armed with a little more knowledge than the person next to us and can sound really intelligent!

Merry Christmas and have fun tree spotting!

Andy Dean



Use Andy's description to identify these six types of conifer

Answers over the page



LUNCHEON CLUB - CHRISTMAS

We will be celebrating Christmas again this year on 19th December at Hunters Lodge, Wincanton. This is our annual get together for all members, cooks and helpers. Our thanks go to all the volunteers who work so hard during the year and continue to make our Club so successful.

Our last lunch at the Hall is on 12th December and we will open again after the Christmas break on Thursday 9th January.

From everyone at Luncheon Club we wish you all a Very Happy Christmas and a Healthy 2025.

Margaret Long & Lesley Trollope

CONIFER QUIZ - ANSWERS:

- A Spruce
- B Pine
- C Larch
- D Fir
- E Cedar
- F Cypress



THE WELCOME CLUB

On Thursday 14th November the Welcome Club held their AGM at Horningsham Hall. We were very pleased we had a very good attendance. Tom the Chairman opened the meeting, welcoming everyone. He then passed it over to Lesley the Treasurer who had given copies of the balance sheet, although we made a loss on three outings this year, we decided to keep the fares for next year at the same cost of £18.00 for members and £20.00 for guests. Lesley did say we need at least 35 people to cover costs. Then we passed a sheet of paper for members to put suggestions for next year's outings. Tom thanked Lesley for all her hard work, and closed the meeting then tea and biscuits were served.

Our Christmas Dinner is on Thursday December 19th 12.30pm for 1.00pm at Hunter's Lodge Wincanton. The next Meeting will be on 20th March 2025 where members pay their membership fee of £5.00 and collect their card listing the outings for 2025.

Pearl Hudson

TO THE CHILDREN OF MAIDEN BRADLEY AND BEYOND: THIS IS A SPECIAL REQUEST TO HELP DECORATE ALL SAINTS CHURCH THIS CHRISTMAS

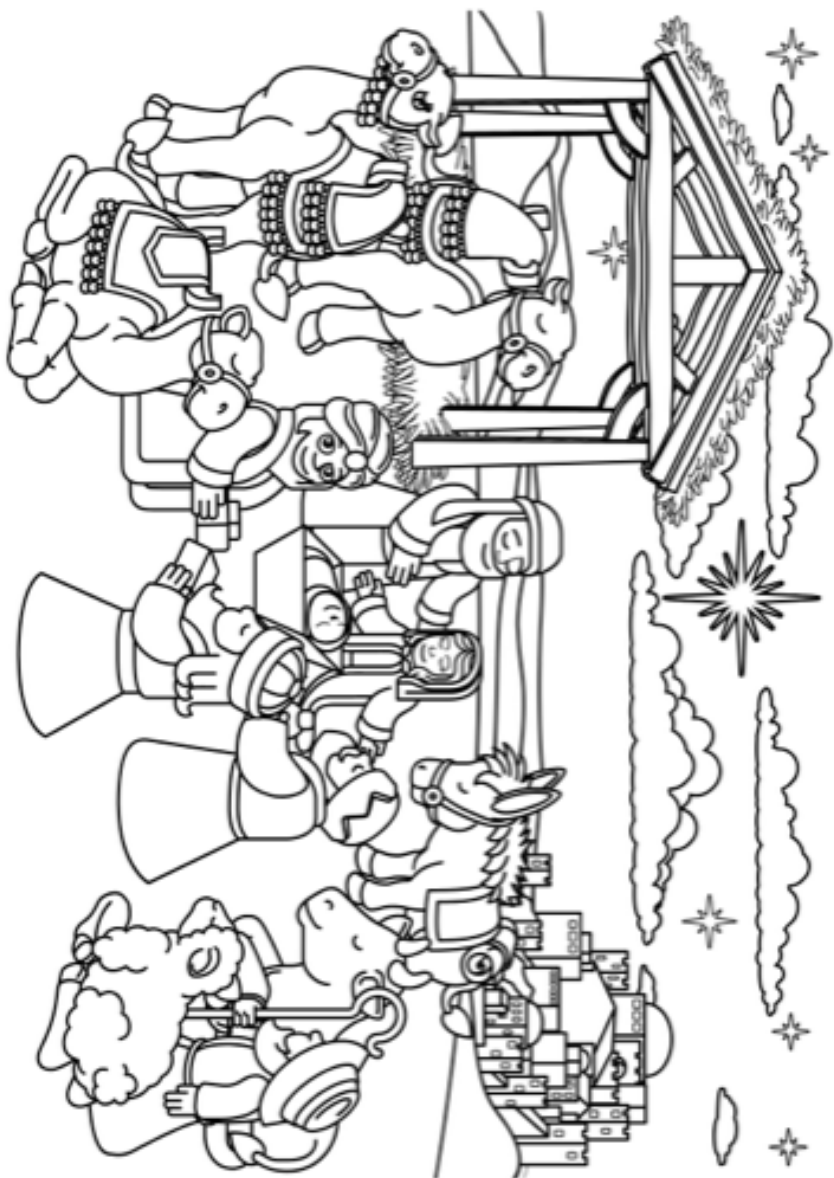
Please would you make a colourful, Christmas-themed picture - either using the picture printed on the back of this page, or you can draw and colour your own Christmas picture.

You can use any type of colour - paints, crayon, felt-tip pens etc., there is no age restriction and you can make as many pictures as you like.

Please bring your artwork to the church during the morning of Saturday 21st December when the church will be decorated and your pictures will be displayed in the children's corner of the church for everyone to admire at the family-friendly Carol Service which is at 10am on Sunday 22nd December.

We look forward to displaying your masterpieces over Christmas and hope to see you at the Carol Service too. Thank you for your help!

NAME



Please Join Us For

CHRISTMAS BINGO

Play Christmas bingo for festive
fun with family and friends.

BYO refreshments

Monday 2nd December
7.30 start
Maiden Bradley
Memorial Hall



Quiz Night

Friday January 17th
7pm start
Maiden Bradley Memorial Hall

Bring your own refreshments

JERRY RAYNER ●
 boiler maintenance ●

Call 01985 841461
 or 07775 755981

For servicing and
 breakdown of oil boilers

- Competitive rates
- Friendly, helpful & efficient
- Call now for a quote

E G MARTIN LTD

for all your
Central Heating Oil

01373 822784
 enquiries@egmartin.co.uk

**your local central heating
 fuel distributor**

**WHAT'S IMPORTANT TO YOU
 IS IMPORTANT TO US**

At NFU Mutual we can look after you, your family and your business.

Our insurance products and financial planning services include:

- Home
- Car
- Business
- Farm
- Equine
- Travel
- Income Protection
- Investments
- Pensions

NFU Mutual Financial Advisers advise on NFU Mutual products and selected products from specialist providers. When you get in touch we'll explain the advice services offered and the charges. Financial advice is provided by NFU Mutual Select Investments Limited.

For a real conversation about your needs call us or pop in
 Perry Farm Offices, Maiden Bradley, Warminster, BA12 7JD
 Tel: 01985 845116



NFU Mutual
 INSURANCE | PENSIONS | INVESTMENTS

S J Weeks & R L Maddocks is an appointed representative of The National Farmers Union Mutual Insurance Society Limited (No. 111982). And an introducer to NFU Mutual Select Investments Limited, a member of the NFU Mutual group of companies.



CHRISTMAS AT THE BRADLEY PANTRY

JOIN US ON THE 1ST OF DECEMBER AT 5:30PM FOR 'TURNING ON THE LIGHTS' CAROL SINGING, MINCE PIES & HOT MULLED WINE AND...



OUR BIG, BIG TOBLERONE RAFFLE! PROCEEDS TO DOROTHY HOUSE CHARITY.



NEW & JUST FOR CHRISTMAS, OUR PANTRY HAMPERS. CHOOSE YOUR OWN ITEMS OR GO WITH ONE OF OUR PRE-SELECTED HAMPERS RANGING FROM £25-£45. PRE BOOK NOW AND GIVE THE PERFECT GIFT FOR ANY FOOD LOVER.

MEET SANTA ON THE 21ST OF DECEMBER IN YOUR PJ'S FOR A CHRISTMAS STORY, A GIFT AND LOTS OF FUN. TICKETS COST £8.50 - INCLUDES A HOT CHOCOLATE, GINGERBREAD MAN AND A GIFT FROM SANTA. TIME SLOTS FROM 4:30-5:30, TICKETS AVAILABLE NOW!



CHRISTMAS OPENING HOURS



CHRISTMAS EVE - 8AM-2PM

CHRISTMAS DAY - CLOSED

BOXING DAY - CLOSED

27TH DECEMBER - 1ST JANUARY - 10AM-4PM



Rural Business Services was established in 1997 to provide professional book-keeping and administration services for small to medium sized rural based businesses. In addition we offer first class Project Management, sound sensible Business Administration & Financial Solutions together with Broad Level Financial Management Experience. No matter how small or big your requirement is we can tailor support to suit your business needs either on or off site.

For more information or to discuss your requirements contact: Lucinda Stokes on 01985 844017 email: lucinda@ruralaffairs.co.uk



Unit J11 Jenson Avenue, Commerce Park, Frome, BA11 2FQ
01373 463866 | Mon-Sat 9-5 | allsopcarpets.co.uk

THE BRADLEY PANTRY VILLAGE GROCERY STORE & COFFEE SHOP OPEN 7 DAYS A WEEK

FRIENDLY SERVICE & GREAT QUALITY LOCAL & ARTISAN PRODUCTS
+ ALL YOUR DAILY GROCERY NEEDS - WE SOURCE AS CLOSE AS POSSIBLE WITH THE BEST OF WEST COUNTRY PRODUCE - FOR YOU TO SHOP LOCAL

ASK AT THE COUNTER OR CALL THE TEAM ON 01985 511 479 FOR BREAD OR PASTY ORDERS

- ROUNDHILL COFFEE - EXTRACT TEA - GREAT CAKE CO - ANN'S CORNISH PASTIES -
LITTLE JACK HORNS SAUSAGE ROLLS - LANDRAGE BAKERY - MILLY MOOS MILK -
HETTIE HENS SCOTCH EGGS - WESTCOMBE CHEDDAR & BRICKELLS ICE CREAM - WILD
FLOUR BAKERY - BUN IN THE OVEN - TAYLORS OF BRUTON - BATH CULTURE HOUSE -
WHITE HORSE HONEY - BINI FINE FOODS - CAVENDISH COOKS - STILL SISTERS -
- STEVE GUNTER & TONIA GUNSTONE ART -
& MANY MORE LOCAL & WEST COUNTRY DELIGHTS

INSIDE AND OUTSIDE SEATING - WELL BEHAVED DOGS WELCOME



OPENING HOURS

MONDAY TO FRIDAY & SATURDAY 0800-1800
SUNDAYS 1000 - 1600



LINK NUMBER 20 - BELLA CRAMER

HOW LONG HAVE YOU LIVED IN MAIDEN BRADLEY?

Nearly two years. I grew up on a farm in Scotland and after over a decade of London life was craving quiet and the open countryside. We moved on 1st January 2023. Our youngest Kit, only two at the time, was swept from his brightly lit, underfloor-heated nursery in Shepherds Bush, stuffed into thermals and plonked into a muddy, frozen field at his new forest school in Crockerton. Maiden Bradley instantly felt like home from the moment we arrived, and we are very lucky to be part of the community.

WHAT IS THE FURTHEST YOU HAVE TRAVELLED IN YOUR LIFE AND WHY?

After Rory and I married we took advantage of time between jobs to travel down the west coast of Australia – a very remote and wild part of the world. We hiked through Karijini National Park, swam with humpback whales off the Ningaloo reef and Airbnb'd our way through countless weird and wonderful homes in the depths of the Outback. We arrived in Sydney a month later, feeling completely bedraggled and out of place among the beach-perfect bodies of Bondi.

TELL US SOMETHING OF YOUR WORK PAST AND/OR PRESENT.

In 2016 I started an art consultancy business, Cramer & Bell, with a friend. Eight years later, it's still a great adventure and learning curve. We source art for both private homes and commercial businesses. This year we won our biggest project to date; the new Rosewood hotel on Grosvenor Square (the former American embassy). It's a beast of a project with six different interior design companies involved. So lots of egos and opinions to juggle!

TELL US SOMETHING ABOUT YOUR LEISURE ACTIVITIES.

I'm at my happiest when walking. Always. Ideally alone (although the dog is allowed).

TELL US ABOUT AN ANIMAL THAT MEANS/MEANT A LOT TO YOU.

Our staffie Roxy. She is a rather weird but heavenly creature. We are her fourth home (through no fault of her own) so naturally she comes with a bit of baggage, but she is just so beautifully human in her characteristics and the best companion for children (as with most Staffies). She has appalling wind, but no-one's perfect.

DO YOU HAVE A FAMILY MEMBER WITH A STORY THAT IS UNUSUAL?

My great uncle was an aviator called Preston Watson, and it is argued that he beat the Wright brothers into the air. My grandmother remembered sewing sheets together as a child for his wings. Eyewitnesses recalled his flying machine – hoisted by ropes and weights into trees before being catapulted with engines running – setting off

from a primitive landing strip on the banks of the Tay in 1903. He joined the Royal Flying Corps at the outbreak of the first World War but was killed in flight in 1915.

WHAT ARE YOU MOST PROUD OF IN YOUR LIFE?

My boys and in 2020 signing my business up to 1% for the Planet; a charity that commits participants to donating at least 1% of annual sales to environmental organizations ([onepercentfortheplanet.org](https://www.onepercentfortheplanet.org)).

TELL US A BIT ABOUT HOW YOU FEEL ABOUT THE FUTURE.

Looking at things from a global perspective – with young children – can feel pretty bleak at the moment. Climate change action is slipping down political agendas and it's hard to see beyond the unfathomable suffering in conflict regions – Gaza, Lebanon, Ukraine, Syria, Sudan... the list goes on. But there are so many incredible individuals and organisations out there doing inspiring work and we can all contribute in our own ways, rather than switching off and disengaging. So in that sense I am hopeful.

TELL US SOMETHING THAT YOU THINK WILL SURPRISE MOST READERS?

I had my eyes tattooed in a Bangkok massage parlour for £5 when I was 18.

TELL US SOME THINGS THAT YOU LIKE/DISLIKE ABOUT THE VILLAGE/AREA.

Maiden Bradley is a very special place. I love the sense of community, the endless goodies at the Bradley Pantry and the pub, and the beauty of the countryside.

WHAT IS YOUR FAVOURITE FOOD?

Currently the cinnamon swirls at the Bradley Pantry. Venison is a close second. I'm lucky to have a husband who eats, sleeps and breathes cooking.

WHAT IS THE BEST BOOK YOU HAVE READ AND WHY DID YOU LIKE IT?

I always want to have an insightful answer to this question, but the truth is that I have an appalling memory and often read books a second or third time, forgetting the first. Recent goodies have been "William Borroughs: A Life" and "Crying in H Mart", a brilliant book about grief, love and Korean food.



COMMUNITY SPEED WATCH NEWS
Police Community Volunteers working on behalf of
the Wiltshire Police and Maiden Bradley



MAIDEN BRADLEY COMMUNITY SPEED WATCH
“VOLUNTEERS, KEEPING OUR VILLAGE SAFE”

CHRISTMAS

The CSW, continue to work together for the safety of the village, and do a great job. However like all voluntary organisations we need a holiday. As is our usual practice to stand down over the Christmas period.

Therefore the week ending the 29th November will be our last week of activity, recommencing activity Monday 6th January 2025.

GOOD NEWS

It's with great pleasure that we welcome Christina to the Community Speed Watch Team. Now fully trained will start activity January 2025. Welcome Christina, great to have you on board and look forward to working with you. Come and join us to find out. You would be very welcome.

This month again the average vehicle count remains the same. However the important point is that it continues to have a very positive effect on those travelling in excess of 20 or 30 mph, the number in excess of the speed limit continues to drop so CSW is definitely having a positive effect.

CSW HUMOUR

Seems there was a notorious speeder driving through a village in Somerset, on his route to work and back and thought it funny to point out to the CSW team that he had a device in his car that pointed out where cameras and CSW teams were operating and active every time he passed.

Anyway one day the same thing happened when a Traffic Car was pulled into a layby quite near to where CSW were operating and the pulled him over, the speeder stepped out of his car ranting and raving he was not speeding, pointing out the device he had. I understand the officer said 'Quite right sir, it does point out the location of speed cameras and in fact you were not speeding. However it does not point out that YOU ARE NOT WEARING YOUR SAFETY BELT'.

Simon Wager - Community Speed Watch Co-ordinator.

CHAIRMAN MAIDEN BRADLEY PARISH COUNCIL

Telephone No 01985 844848 Mobile 07721 362828



MERE AND DISTRICT LINK SCHEME
Charity Registration 1062328
www.merelink.org.uk

We remain busy with 115 trips in September including 38 trips to Salisbury District Hospital and 12 to RUH Bath.

Please call 01747 860096 to book a driver or to volunteer as a Link driver. As a charity we do not charge for trips but ask for a donation. Please remember that our coordinators work in their own homes – we do not have an office - so please keep calls to 9-5 Monday to Friday and only use the 01747 860096 number.

With the Christmas and New Year holidays fast approaching we are happy to confirm that the Link will continue to take people to medical appointments over the holiday period.

However, please note that our phone will not be “manned” on 25, 26, 27 December 2024 and 1 and 2 January 2025. If you have a medical appointment between these dates please let us know by 23 December, if at all possible, to give us the best chance of getting you a driver.

John FitzGerald,

Link Chair

01747 860867 or 07795606426

Link phone:

01747 860096

WELCOME DRINKS PARTY

There was an excellent turn out for the drinks party in the village hall to welcome the new residents of The Old Timber Yard and anyone else who had recently moved into the village. There seemed to be lots of new connections made and hopefully friendships formed. Thank you all for coming and for entering into the spirit of the evening, also for bringing such delicious canapés and nibbles.





Iles & Vincent Funeral Services,
a family focused, caring and approachable
funeral directors run by
Anna Iles and Beverley Vincent.

ILES & VINCENT

FUNERAL SERVICES

WARMINSTER'S ONLY INDEPENDENT FUNERAL DIRECTOR

Classic and traditional funeral ceremony,
small and intimate service or no service at all
with a direct cremation, we are here to help,
guide and support you every step of the way
with sensitivity, experience and empathy.

- Over 2 decades of experience
- 24 hr funeral service in & around Warminster
 - Tailor made funeral services
- Advice & help on all aspects of the service
 - Funeral Plans

The Cornmarket, Warminster BA12 9BX
01985 220161 (24 Hours)
info@ilesandvincentfuneralservices.co.uk

THE SEND-OFF

Down the close, darkening lanes they sang their way
To the siding shed,
And lined the train with faces grimly gay.
Their breasts were stuck all white with wreath and spray
As men's are, Dead.

Dull porters watched them, and a casual tramp
Stood staring hard.

Sorry to miss them, from the upland camp.
Then, unmoved, signals nodded, and a lamp
Winked to the guard.

So secretly, like wrongs hushed up, they went.
They were not ours;
We never heard to which front these were sent,
Nor there if they yet mock what women meant
Who gave them flowers.

Shall they return to beatings of great bells
In wild trainloads?

A few, a few, too few for drums and yells
May creep back, silent, still village wells
Up half known roads.

Wilfred Owen

Wilfred Owen wrote this poem while at Ripon Camp in the Spring 1918.
Although it is apparently about going off to war, the poem is really about how
many soldiers are killed in war, and the contrast between the excitement of the
send-off and the realities of death

He was killed in action a week before the Armistice was signed
Simon Wager.

Support needed with computers, broadband or phones ?

CONTACT THE VILLAGE HELPDESK

Computing at Home
Nigel Lavender - 01985 844637

Cooked Breakfast + Invited Speaker
at Horningsham Village Hall
1st Saturday of the month

RURAL VOICES

JULIAN HIGHT
The Ancient Trees of Selwood
Forest and Longleat

9am, 7th December 2024

HORNINGSHAM VILLAGE HALL
01262 51200

THE BRADLEY HARE - REVIEW

As the weekend slowly winds down, there's something special about gathering for Sunday lunch—a meal steeped in tradition and comfort. I was invited to enjoy a traditional Sunday roast at The Bradley Hare, a charismatic and charming pub that promises warmth and nostalgia.

The welcoming atmosphere of the pub set the tone for a leisurely and sociable Sunday afternoon. Two large rooms filled with bustling families reminded you why Sundays are for slowing down, stepping away from the turning season, and enjoying time socialising over a warm, delicious meal.

The menu was a tribute to the classics and offered seasonal and locally sourced produce. After selecting from a wide selection of drinks, my companion and I opted for deliciously plump nocellara olives and freshly baked sourdough bread with balsamic and oil to start. The main course, however, was the pièce de résistance: a traditional roast with all the trimmings. I opted for pork which was paired with a lovely apple sauce that brought out the sweetness of the meat. My companion opted for the vegetarian option, a generous serving of roasted celeriac, which similarly received glowing reviews. The accompanying Yorkshire puddings were puffed and golden, the roast potatoes crisp on the outside and fluffy within, and the medley of sweet carrots and red and green cabbage was both vibrant and delicious. The gravy? Rich, savoury, and plentiful, just as it should be.



The Bradley Hare has something for everyone, and there was no skimping on portions. Consequently, my companion and I were too full to enjoy a dessert, but admired the tempting selection of sweet and savoury options.

Whether you're a local or just passing through, The Bradley Hare should be bookmarked as the place to unwind and savour the best of Sunday tradition. If you're looking for great food, excellent service, and that quintessential Sunday roast experience, you won't be disappointed!

Thank you to Conor and Elliot for organising a delightful afternoon,

Lucy Bowles - Roving Reporter

THE BRADLEY HARE

CHRISTMAS IS COMING!

JOIN US AND ENJOY AN AMAZING CHRISTMAS PARTY!

Christmas parties at The Bradley Hare!

Enjoy a 2 or 3 course festive feast in our private dining room!

£45 for 2 courses

£50 for 3 courses

Minimum of 8 guests

Booking is required!

Email Restaurant@thebradleyhare.co.uk or
Reception@thebradleyhare.co.uk to book in!

Book before the 1st of December and receive a complimentary bottle of house red or white wine!

2025 IS JUST AROUND THE CORNER!

Join us for NYE and enjoy a beautiful 7 course tasting menu, carefully designed by our Head Chef!

£95 per person, includes a glass of fizz upon arrival to begin your new years celebration

Arrival for 6pm, food will begin at 6:30pm!

Booking is required by the 24th of December, email Reception@thebradleyhare.co.uk or Restaurant@thebradleyhare.co.uk to book in or for any questions!

Full payment of £95 per person will be taken upon booking to secure your table.