

MAIDEN BRADLEY NEWS

JULY 2023

Three villages HGV campaign

Chapmanslade, Corsley, Maiden Bradley



SEE CENTRE SPREAD

MAIDEN BRADLEY PARISH NEWS - ISSUE 409

- 2 Sun Catch up in the Hall 10am
 3 Mon Pilates – NEW CLASS 9.30-10.30am
 Contact Dawn 07936271806
 5 Wed Household Waste collection
 8 Sat Underwoods Fish and Chip Van 4.30-5.30pm
 9 Sun Service of the Word – Lay led 10am
 10 Mon Green recycling
 12 Wed Black box and Blue Bin recycling
 16 Sun Morning Worship with LLM Jane Hurd 10am
 19 Wed Household Waste collection
 20 Deadline for copy for MBNews
 22 Sat Underwoods Fish and Chip Van 4.30-5.30pm
 23 Sun Parish Communion led by Rev Liz Smith 10am
 To include Wedding Banns
 24 Mon Green recycling
 26 Wed Black box and Blue Bin recycling
 30 Sun No service

SATURDAY AUGUST 19TH

MAIDEN BRADLEY ANNUAL PRODUCE SHOW

SUE AND JOHN'S LAST YEAR OF ORGANISING THE SHOW



EDITORIAL

The sound of the beat from Glastonbury echoes around the village and I cannot think what would be worse, attending the festival in the rain or in the heat of this summer. Had I known who was playing this year, I would have been tempted to try for a ticket.

How is your summer progressing? Why not share your holiday/summer activities with us.

The person sending us the most interesting account will receive a £20 book token. Stories will be published at a rate of one per month and dependent upon how many we receive. The title of this initiative is My Summer 2023. Copy to me by 1st October 2023. Open to all ages. So don't be shy, give it a try.

Patricia Kennedy 845397 pat@visa-office.com



USEFUL TELEPHONE NUMBERS

Speed Watch Co-ordinator	Simon Wager	simon.m.wager@gmail.com
Neighbourhood Watch Co-ordinator	Derek Stevens	01985 844428
Community Garden	Sam Ribeck	sam.ribeck@btinternet.com
Book Club	Jessica Johnson	01985 844174
Cookery Demonstrations	Rosie Brown	01985 844236
Luncheon Club	Margaret	01985 844756
Welcome Club Outings	Pearl	01985 219289
Scrabble Club	Sue	01985 844919
Memorial Hall bookings	bookingsmaidenbradleyhall@gmail.com	01985 845303
Dr Andrew Murrison MP	murrisona@parliament.uk	01225 358584
Bill Parks (Wiltshire Cllr)	bill.parks@wiltshire.gov.uk	07712 490075
Mere Link Scheme		01747 860096
Bell Ringing Tuesday 7.30pm in the Church Bell Tower - beginners welcome		01985 845397
Church contact	Diana Bourne	01985 844500
Environmental issues	greenermaidenbradley@gmail.com	
Nadder Oil Buying Club	Email:richard.willan@me.com	www.oilbuyingclub.com

MAGAZINE AVAILABLE ONLINE ON THE VILLAGE WEBSITE:
WWW.MAIDENBRADLEYVILLAGE.ORG.UK

Maiden Bradley Memorial Hall

01985 845303 leave message
 www.maidenbradleyhall.co.uk
 maidenbradleyhall@gmail.com



Monday 9:30-10:30
 Maiden Bradley Memorial Hal

NEWCOMERS WELCOME

For more info please call Dawn 07936 271806

dawnbaynham@hotmail.co.uk

WHAT'S HAPPENING THIS MONTH...

MONDAY 26TH JUNE –

NEW STARTING WEEKLY PILATES CLASS 9.30-10.30AM

for more info please contact Dawn 07936 271806

SUNDAY 2ND JULY 10-11AM – CATCH-UP COFFEE MORNING

SATURDAY 8TH JULY 4.30-5.30PM – UNDERWOODS FISH & CHIP VAN

SATURDAY 22ND JULY 4.30-5.30PM – UNDERWOODS FISH & CHIP VAN

SATURDAY 19TH AUGUST 2PM – PRODUCE SHOW



REGULAR EVENTS

MONDAYS	9.30 - 10.30 Pilates with Dawn 11.00AM-MIDDAY Slow Flow Yoga 5.00PM-6.00PM Dr's Surgery
TUESDAYS	9.30AM - 10.30AM Bradley Babies 1.00AM - 3.00PM Post Office Service
WEDNESDAYS	6.15PM-7.15PM Yoga Flow
THURSDAY	11.00AM - MIDDAY Restorative Yoga
FRIDAYS	10AM-12PM Coffee Morning EVERY OTHER SATURDAY Fish and chip van

BOOK LIBRARY AVAILABLE DURING HALL OPENING FRIDAY MORNINGS

VILLAGE HALL LOTTERY

MAY

1st Richard Holmes	£25.25	2nd Simon Murray	£12.60
3rd Nigel Lavender	£7.65	4th Dave Barnett	£5.00

JUNE

1st Esme Channer	£25.25	2nd Vicki Olding	£12.60
3rd Jessica Johnson	£7.65	4th Paul Cox	£5.00

Thank you.....

To all those contributors to the Hall Lottery, a very big thank you for helping maintain this vital social hub. Over this year alone £600+ has gone to you in prizes and £600+ to the maintenance of the Hall.

If you would like to help support your Village Hall, please get in contact with John Priestner on 844244 who has some spare numbers. Only 50p per number per month, you can have more than one number. Half the draw's income goes to the Village Hall and half goes in prizes.

**A huge 'thank you' from the Memorial Hall Committee
to everyone who supported the plant, cake and produce sale
on Sunday 18th June.
We raised a whopping £500!**

And don't forget -

**Saturday August 19th 2pm
VILLAGE PRODUCE SHOW**



Entry forms
were distributed with last
month's News

if you need one please contact
John or Sue Priestner 844244



JERRY RAYNER ●
boiler maintenance ●

Call 01985 841461
or 07775 755981

For servicing and
breakdown of oil boilers

- Competitive rates
- Friendly, helpful & efficient
- Call now for a quote

E G MARTIN LTD

for all your
Central Heating Oil

01373 822784
enquiries@egmartin.co.uk

*your local central heating
fuel distributor*

GREEN MAN

Professional,
Eco-friendly
Carpet, Hard Floor,
Rug & Upholstery
Cleaning

FROME: 01373 470416

www.greenmancleaning.co.uk

NCCA
NATIONAL CARPET CLEANERS ASSOCIATION
MEMBER 3007

Garden Competition

It's that wonderful time of year when our gardens and gardening take centre stage. As part of our annual Produce Show, we will be holding the Best Village Garden Competition and judging will take place in the week beginning 31st July 2023.

If you would like to enter the competition please call or email me before the 21st July. I will need your name, address and a contact number. If there is no reply, please leave a message on the answerphone.

**Email: jawylie@sky.com
Tel: 01985 844664**

I am pleased to announce that the judge this year will be Martin Hurt, a Kew-trained, professional horticulturist. Thirty years ago he set up Plantworld in Milton on Stour which has now grown into a large, thriving, retail plant centre. Martin is extremely knowledgeable and experienced in all everything related to growing, planting and design.

I will call you in the week before judging to let you know exactly when Martin and I will be popping in to visit your garden.

The winner of The Memorial Rose Bowl for the Best Village Garden will be announced at the Produce Show on Saturday 19th August 2023.

**Good Luck!
Adrian Wylie**

HORNINGSHAM LUNCHEON CLUB

The Luncheon Club held their AGM in May. All members present were happy with how the Club is run and the delicious meals they enjoy.

Thanks were given to all the cooks and helpers who provide these meals each week.

Pearl, our treasurer, gave out the income and expenditure sheets for the year ending 31st March 2023. Although we have a healthy amount in the bank, there was a discussion on the price of the meals. Cooks are very thrifty in buying the ingredients for the meals, but prices have risen sharply over the last two to three months. It was proposed that from September the price would go up to £4 each week, which was agreed by nearly everyone present.

Members were asked to continue to bring a prize each week for the raffle. The money collected from this helps with the rent of the Hall.

We thanked the Horningsham Hall committee for the favourable rate we are charged for the rent each Thursday, but fully expect this to rise due to the increase in electricity prices.

The annual outing for members, organised by Pearl will this year be on Thursday 3rd August to Dartmouth. The Christmas Lunch will again be at Hunters Lodge at Wincanton in December.

This brought the meeting to a close.

We will be closed during August with the last lunch on 27th July and reopen again on Thursday 7th September.

THE WELCOME CLUB

On Tuesday 27th June the Welcome Club held their monthly outing and this time it was to Weston Super Mare. We had lovely drive through Cheddar gorge and stopped at Cheddar for ninety minutes for our coffee break and the opportunity to visit the caves and buy some cheese. We then continued to Weston getting there at 12.30pm. Everyone did their own thing getting lunch, doing some shopping, people watching while seated on the front, and some of us even paddled in the water but the water was cold and it took us ten minutes to get to the sea where we paddled for 5mins and then 10 mins to walk back.

We left Weston at 4.30pm stopping at Clarkes village shopping centre for a comfort break and raffle. Afterwards we went through Pilton village and saw where the Glastonbury festival was held and where they were still packing up. Fields of glamping tents still to be dismantled and so we realised we were too late to attend. We were nearly at Frome on the homeward journey when we had to turn round because the road was closed for some reason and our onward route took us through Trudoxhill, getting home at 7pm. Our next outing is to Sidmouth on Tuesday July 25th if you are interested in coming please contact Pearl on 01985 219289 or Lesley 01985 211355



Maiden Bradley with Yarnfield Parish Council

Part of the Unitary Council of Wiltshire

Chairman: Simon Wager

Clerk: Jen Gregory 07912177288 clerk@maidenbradley-pc.gov.uk

All meetings are normally open to the Public and Press

I HEREBY GIVE NOTICE THAT THE ANNUAL MEETING OF THE MAIDEN BRADLEY WITH YARNFIELD PARISH COUNCIL WILL BE HELD ON Tuesday 27th JUNE 2023 AT 7.00PM MAIDEN BRADLEY VILLAGE HALL

PUBLIC PARTICIPATION

Members of the public and press are entitled to attend the meeting unless the Parish Council by resolution enters confidential session. Within this public session, members of the public may make representations, ask, and answer questions and give evidence on any matter affecting or of concern, by addressing the Chairman. Members of the public are requested to raise any matter during this session as the rest of the meeting is not open to public participation.

AGENDA

ELECTION OF CHAIRMAN To elect a Chairman for this municipal year. Upon his/her election, the Chairman will be invited to formally subscribe a declaration of acceptance of that office.

ELECTION OF VICE CHAIRMAN To elect a Vice Chairman for this municipal year. If appointed, upon his /her election, the Vice Chairman will be invited to formally subscribe a declaration of acceptance of that office.

WELCOME & APOLOGIES To consider any apologies for absence.

PARISH COUNCIL MEMBERSHIP

- a. To receive any updated Register of Interests.
- b. To consider Councillors responsibilities to oversee the following:

Community and Tourism	Currently Cllr Bridgen
Defibrillator	Currently Cllr Bridgen
Financial Checks/ Parish Steward oversight	Currently Cllr Seymour
Footpaths/Signage	Currently Cllr Halligan
Intermediary for Estate	Currently Cllr Seymour
Litter Pick	Currently Cllr Stancomb
Recreation Ground	Currently Cllr Wager / Cllr Barrass proposed

Other items to cover

DECLARATIONS OF INTEREST To DECLARE interests, RECEIVE written dispensation requests for items of disclosable pecuniary interest and GRANT requests where appropriate. Under the Parish Council's Code of Conduct in accordance with the Localism Act 2011 and The Relevant Authorities (Disclosable Pecuniary Interests) Regulations 2012,SI No. 1464.

CONFIRMATION OF MINUTES To receive minutes of the Parish Council Meeting held in May 2023. To recommend these are approved as a correct record and agreement given for them to be signed by the Chairman.

CHAIRMAN'S REPORT / INTRODUCTION To receive a short introduction from the newly appointed Chairman.

PLANNING MATTERS FOR CONSIDERATION Update on applications from last meeting where appropriate:

None Received

To consider the following planning applications: None Received.

FINANCES Bank Mandate update from Clerk. To present current financial statement and balance on accounts – Balance on accounts showing as £36931.29 as at 31st May 2023

RFO advised that the precept of £14310.13 received as instalment 1 from Wiltshire Council. To agree schedule of payments as indicated below:

Payment Method	Details	Amount
D/D	Lloyds Corporate Card Fee	£3.00
D/D	IONOS Monthly Fee	£18.00
BACS	K M Dike - To Pay Ground Maintenance April	£307.79
BACS	K M Dike - To Pay Ground Maintenance May	£307.79
BACS	Francesca McClean Illustration - to Pay Design & illustration of Maiden Bradley Logo	£75.00
BACS	Cloudy Group - to Pay Computer Support Package May	£80.29
BACS	Cloudy Group - to Pay Computer Support Package June	£80.29
BACS	WALC - To Pay Subscription for 2023/24	£141.46
BACS	K N Harvey - To Pay Internal Audit Services	£190.00
BACS	Maiden Bradley Memorial Hall to Pay Contribution of Bench Cost (David Morse)	£232.50
		£1,436.12

Payment to HMRC to be agreed once access has been granted – deadline for payment 22nd July

To receive YE End Accounts signed by RFO

To receive Internal Auditor Report and as a result Sign off Annual Governance Return for 2022/23

To set period of Public inspection : recommend 3rd July to 11th August 2023.

To update councillors on Clerks hours since start date.

TO RECEIVE REPORTS ON COUNCILLOR RESPONSIBILITIES

To receive Report from Wiltshire Councillor Cllr Parkes

Areas of responsibility All Councillors

OTHER BUSINESS REFERRED TO THE CLERK

Finger Post Refurbishment – Cllr Wager

Removal of Saplings re noticeboard – Cllr Bridgen

Reduction in Yew Trees on the Knapp – Cllr Bridgen

Request for Signposts Church Farm – Cllr Halligan

Suggestions from new Clerk – Grant application scheme (attached), Website, others.

CORRESPONDENCE

Idverde – Litter Pick general information of supporting litter pick events/ Educational opportunities.

Carriageway Repair works - on Gare Hill Road, Maiden Bradley with Yarnfield, Warminster. These works involve asphalt patch repairs, adjustment of ironwork, reinstatement of road markings and associated maintenance works. The works will be completed on **Wednesday the 28th of June 2023** between the hours of **07:00 and 19:00**,

Shearwater Parking – For information only

DATES OF FURTHER MEETINGS

To agree Full Council meeting dates for the coming year including:

Annual Parish Meeting & Half yearly budget considerations (suggested September) and the 2024 Annual Parish Meeting (suggested May 2024)

Close

Computing@home

Computer support and training run specifically for home users.
Available remotely or in person Ideal for anyone without IT experts easily on hand. IT terrified to advanced - silver surfers a specialty.

Contact Nigel on:
www.computing-at-home.co.uk
01985 844637

WHAT'S IMPORTANT TO YOU IS IMPORTANT TO US

At NFU Mutual we can look after you, your family and your business.

Our insurance products and financial planning services include:

- Home
- Car
- Business
- Farm
- Equine
- Travel
- Income Protection
- Investments
- Pensions

NFU Mutual Financial Advisers advise on NFU Mutual products and selected products from specialist providers. When you get in touch we'll explain the advice services offered and the charges. Financial advice is provided by NFU Mutual Select Investments Limited.

For a real conversation about your needs call us or pop in
Perry Farm Offices, Maiden Bradley, Warminster, BA12 7JD
Tel: 01985 845116



 **NFU Mutual**
INSURANCE | PENSIONS | INVESTMENTS

S J Weeks & R L Maddocks is an appointed representative of The National Farmers Union Mutual Insurance Society Limited (No. 11982). And an introducer to NFU Mutual Select Investments Limited, a member of the NFU Mutual group of companies.



Three villages HGV campaign

Chapmanslade, Corsley, Maiden Bradley

ON FRIDAY 23 JUNE, 2023, AS PART OF OUR ONGOING CAMPAIGN, THE THREE VILLAGES OF CHAPMANSLADE, CORSLEY AND MAIDEN BRADLEY, MET WITH DR ANDREW MURRISON MP, CLLR BILL PARKS, COUNCILLOR FOR WARMINSTER NORTH AND RURAL, AND CLLR CAROLINE THOMAS, CABINET MEMBER FOR TRANSPORT, AND SAMANTHA HOWELL, DIRECTOR OF HIGHWAYS AND TRANSPORT – WILTSHIRE COUNCIL.

Members of the three-villages campaign felt that it was a productive and encouraging meeting.

The three villages set out their objective for Wiltshire Council to ensure use of the strategic freight routes by freight operators and thus protect vulnerable rural villages from HGV 'leakage' onto inappropriate roads. Each village explained how HGVs impact on their local communities, and identified practical solutions to allow for the implementation of the weight limits that were proposed and deferred by Wiltshire Council in 2011.

Cllr Thomas and Samantha Howell outlined their action plan to collect and analyse traffic data, in order to update and reinvigorate the study that informed the original weight limit decisions. They confirmed that the purpose of this exercise is to provide evidence required to support any future implementation of the weight limits. They explained that decisions will be evidence-led, and subject to funding availability. Road safety is a Business Plan priority for Wiltshire Council, and in the context of the Wiltshire and Swindon Road Safety Partnership, resources are prioritised based on need across the County.

Next steps were discussed, including the need to secure funding for both data analysis and physical intervention for example, additional traffic management measures or junction improvement; timelines; and efforts to engage relevant stakeholders, such as National Highways, Somerset Council, the Mendip Quarry Producers and local schools.

Dr Andrew Murrison, our MP, who has supported the three villages throughout our campaign, expressed his support for the action plan. Recognising the decision by Wiltshire Council in 2011 to defer further work was

based on the need for National Highways to improve the A303/A350 junction, he also confirmed support for progressing local solutions whilst awaiting strategic solutions which could be some time away.

Cllr Bill Parks helped to identify the practical and immediate solutions for each village and to encourage Wiltshire Council to focus on a local and immediate solution.

The three villages felt the meeting represented a significant change in approach from Wiltshire Council. Although the timeline ahead is still years rather than months, there is now at least a clear pathway forward. For the first time, there was both recognition of our common HGV problem, and an effort to focus on practical solutions. We are cautiously optimistic.

THE NEXT PROGRESS MEETING IS PLANNED FOR AUTUMN 2023.



A Sense of Place Alice Maddicott

When we think about environmental issues – the urgency of the climate emergency, floods, storms, heat – it can sometimes feel abstract, very much in the world but not located, even if we can feel changes in the places we know. I have lived in the area for many years and grew up nearby and the weather does seem hotter or colder or odder... I have a sense of this place and how it changes as we all do.

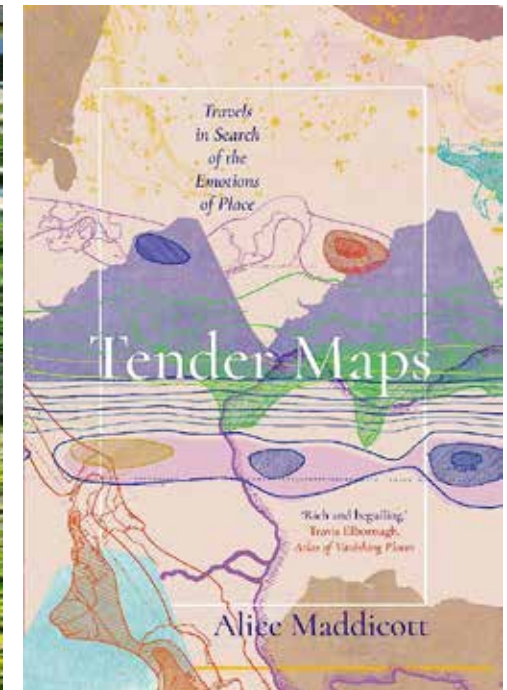
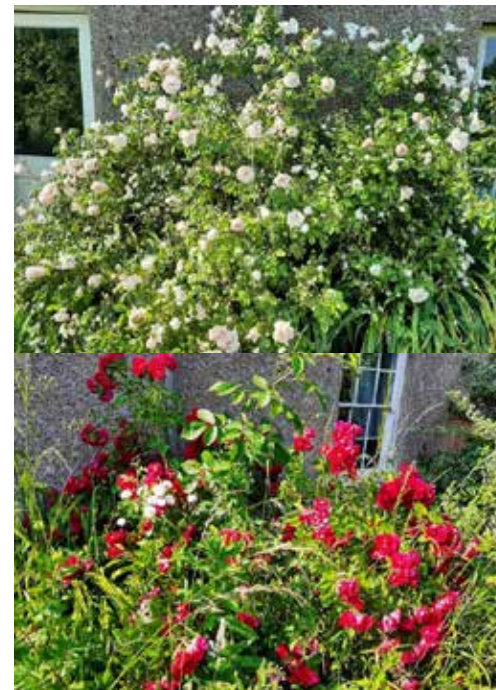
But on this beautiful sunny morning as I stare out of my window at cascades of roses that borderline on obscene in abundance this year, when I watch the baby birds being fed by their mums and the bees flying, gorging themselves on comfrey, mallow and cranesbill (despite hours spent my garden will always be a little wild), I am reminded that this sense of place is a beautiful hopeful thing. That if we pay attention to our surroundings it can remind us of where we care about. That there are these grand messages the planet can send us, but also that a sense of being in place can be a gentler way of communicating with our world that still makes a difference.

My new book, *Tender Maps*, is out this month and its subtitle is *Travels in Search of the Emotions of Place*. My premise was a somewhat futile but hopeful quest to explore what atmosphere is. As I wrote and thought back through past travels I also began to write extensively about my beloved West Country and tried to distill what its atmosphere could be. I walked and walked, especially in my two favourite places close to the village – up on the downs to once side, deep in the forest on the other. I wanted to delve deeper into what they really felt like to be in and as I did so I discovered that my paying attention was opening up a whole new world, not just of atmosphere but that this atmosphere was helping me notice the wild flowers I might not have spotted before, particular birdsong, trees, creatures, how the wind moves through the trees, hints of the stories of other people who had walked here long ago. When I talk of a sense of place I think what I am trying to say is that if we all pay a little

more attention, then the wonder that our landscapes can reveal is quite softly transformational. If everyone listened to the landscapes around them, opened themselves up to how they can create a wider sense of home, then the small acts that can make a large difference come more naturally. Not spraying the insects away, feeding the birds, picking up the litter as a matter of urgency as I know many brilliant villagers already do. We take care of the places we grow to love and if that sense of place becomes almost a dialogue, the sense of landscape as living companion, then that taking care becomes a natural part of our daily lives. Lots of brilliant people doing small acts with good intentions is how we start to impact on a bigger scale. If we all take care of our home landscapes, then across the world we stand a better chance of looking after what we have, of in a small way creating a big difference. A greener Maiden Bradley is a pocket of a wider greener world. That is worth something.

So without sounding too much of a hippy my invitation to you this month is to walk a little differently, to pause in your garden and feel the air around you, to notice the detail, to make one little change, to open yourselves to this sense of the wonderful place where we live and see how it makes you feel; to see how it feels in turn.

Alice's roses - and her new book 'Tender Maps'



garston
VETERINARY GROUP



Not all veterinary practices are the same
We are available to care for your pets, horses and animals 24/7
If your pet is overnight with us, they are never left alone
Garston vets - a truly independent approach to animal care for over 100 years.



Frome 01373 452225	Melksham 01225 617779	Trowbridge 01225 754021	Warminster 01985 213350	Westbury 01373 301448
-----------------------	--------------------------	----------------------------	----------------------------	--------------------------



www.garstonvets.co.uk



MERE AND DISTRICT LINK SCHEME

www.merelink.org.uk



01747 860096
9am – 5pm Weekdays Only

May was again a busy month with 109 trips including 26 to Salisbury District Hospital.

Our volunteer drivers take clients to medical appointments, including Covid vaccinations, and even shopping when resources allow. We do both long and short trips. For example, in May we had trips to Basingstoke, Bath and Southampton hospitals and to appointments in Mere. So if you would like to find out more about volunteering as a driver please call our co-ordinator on 01747 860096.

Once you have an appointment please call 01747 860096 to book a Link driver. As a charity we do not charge for trips but ask for a donation. Please remember that our co-ordinators work in their own homes – we do not have an office - so keep calls to 9-5 Monday to Friday and only use the 01747 860096 number. Also, please try to give us a minimum of 48 hours notice, if at all possible, as we cannot guarantee our co-ordinator will be at home to arrange last minute requests.

When you read this we will have had the Link Scheme AGM. If you were able to come I hope you had an interesting and enjoyable evening.

John FitzGerald - Link Chair
Mere and District Link Scheme
01747 860867
07795606426
Link phone 01747 860096
www.merelink.org.uk



ALLSOP CARPETS & FLOORING
DOMESTIC • COMMERCIAL • INDUSTRIAL

Christchurch Street West, Frome. BA11 1EB

TEL: 01373 463866
MOBILE: 07887 953014

www.allsopcarpets.co.uk

AMULET RESIDENTIAL
Tailored Lettings & Property Management
Residential Sales
Mere - 01747 356176
Maiden Bradley - 01985 844972
Anne Freeman
Local, Reputable, Honest & Approachable
Free No Obligation Valuations
amuletresidential@gmail.com
Find us on Facebook
www.onthemarket.com



Rural Business Services was established in 1997 to provide professional book-keeping and administration services for small to medium sized rural based businesses. In addition we offer first class Project Management, sound sensible Business Administration & Financial Solutions together with Board Level Financial Management Experience. No matter how small or big your requirement is we can tailor support to suit your business needs either on or off site.

For more information or to discuss your requirements contact
Lucinda Stokes on 01985 844017
www.ruralaffairs.co.uk • email: lucinda@ruralaffairs.co.uk



LINK NUMBER 4 - KRISS HENDY

HOW LONG HAVE YOU LIVED MAIDEN BRADLEY?

We moved here on 21st December 2022, so we are coming up on 6 months in the village and it has been everything that we have wanted so far.

WHAT IS THE FURTHEST YOU HAVE TRAVELLED IN YOUR LIFE AND WHY?

Polly (my wife) and I have been lucky enough to travel a fair bit together. We lived in on the east coast of Australia (Byron Bay) for 5 years between 2012- 2017, and then moved to Bath on our return.

TELL US SOMETHING OF YOUR WORK PAST AND/OR PRESENT

Our business is called Strength For Endurance Ltd, which specialises in Injury Rehabilitation and Endurance Performance. Essentially we help anyone and everyone who enjoys running, riding, walking, hiking, climbing, swimming etc. to stay healthy, fit and strong plus to navigate injuries when they crop up!

TELL US SOMETHING ABOUT YOUR LEISURE ACTIVITIES

I enjoy most forms of activity, always keen to go for a run, ride or swim, but played most sports growing up.

My first passion is inline hockey, which I grew up playing and was lucky enough to play for Great Britain both at a junior and senior level all across Europe, America and Canada. I'm looking forward to spending more time playing sport with my two boys as they grow up and whatever they decide to do in the future.

DO YOU HAVE A FAVOURITE FILM?

I always enjoy this question as I can have a different answer each time - right now, I would say "Robin Hood Prince of Thieves" and "Jurassic Park" - both bring a lot of nostalgia and childhood memories.

WHAT ARE YOU MOST PROUD OF IN YOUR LIFE?

I am proud of a lot, marrying my wife Polly, starting and running our business together, but I would happily say it is my two boys (George & Archie)

WHAT IS YOUR FAVOURITE WAY TO ENTERTAIN YOURSELF?

If it isn't some form of exercise or training, it would certainly be some form of DIY or maintenance work, I very much like being productive and enjoy the listening to podcast, audio book or music playlist whilst doing so.

TELL US SOME THINGS THAT YOU LIKE ABOUT THE VILLAGE

The immediate access to the surrounding nature is by far the biggest win for us a family - we love the fact that we have met so many of the villagers already and are looking forward to meeting more of you as we live here. We both grew up in small villages in Sussex and New Forest, so having a community is exactly what we were looking for now we have the boys.

WHAT IS YOUR FAVOURITE SEASON?

I love Spring with Autumn being a close second. The changing of these seasons in particular are just amazing in nature!

TELL US ABOUT A CRISIS IN YOUR LIFE

One of the most profound times in my life was breaking my knee was playing hockey - I was skating up the boards and got 'routinely checked' off the puck, but this time the player accidentally fell onto the side of my leg and fractured the top of my tibia. This injury placed me in a full leg cast for 3 months which I fully rehabbed before re-doing the injury 2 years later, having to restart my injury rehab again...So you can see where my passion for helping others with injury and pain has come from!

TELL US ABOUT A HIGHLIGHT IN YOUR LIFE

One of my proudest athletic achievements was competing at the IIHF World Championships in Germany, where we won the Gold medal in Pool B, competing against the best inline hockey players in the world. As an amateur player, I got to skate against professionals (millionaires) who do this for a living!

WHAT IS THE BEST BOOK YOU HAVE READ AND WHY DID YOU LIKE IT?

Two books stand out in my mind currently - the first is 'Shoedog' the story of how Nike become the company it is. The second is "The Comfort Crisis" a great read on how lifestyles have been and are currently perceived. Oh and a third - "Call of the Wild"

ILYRIA

ROBIN

HOOD

adapted by Oliver Gray

THE ELIZABETHAN EVENING AT MANOR FARM,
BA12 7QE Sunday 30 July 2023 at 6.30pm

Tickets: illyria.co.uk,
01373 832 113

Gates open: 5.30pm. Performance approx. 1hr 50mins (inc 20min interval). Seating IS PROVIDED. Picnics welcome.
Cancellation in dangerous weather only, when performance will be rescheduled. Adults £16 Child £10. Tickets are non-refundable. Licensed Bar

www.theelizabethanevening.com



COMMUNITY SPEED WATCH NEWS

Police Community Volunteers working on behalf of
the Wiltshire Police and Maiden Bradley



Community Speed Watch News. Compiled by the Maiden Bradley Community Speed Watch Volunteers to keep the village safe and aware of our activities.

“High Street”

or “Well, that did not go very well”

It was far more a case of “Look out CSW, here comes the Fuzz!”

Within a day of our team working High Street from the original approved location we had a phone call to say we could not carry on as the site was not approved. Followed by a request to Wiltshire Council by us to get a Metrocount carried out! Why? has that already been done to approve the requirement for the 20mph limit? Anyway after much negotiation and some very positive support from our councillor Bill Parks we have to get a new set of Metrocount figures produced. That could take up to 6 months as the Metrocount people are flat out. In the meantime we cannot work on the High Street.

However we are not sitting still, we are in the process of re applying for the original CSW location to be approved again. Plus a new location by the entrance to the Millennium Trees recently planted. This will give clear sighting both East and West on high Street plus very good sighting along Back Lane to pick up the speeding vehicles through that section.

Finally to add pressure we are re applying for the reduction of the speed Limit on Back Lane and the section of Kingston lane from the junction with Back Lane to the junction with the B3092.

We have carried out four CSW sessions on the B3092 one at the bus stop and three by the church, while it has not shown a great number of those in excess of the 30mph limit it does show the extremely high level of vehicles passing through our village averaging about 109 per hour.

Finally we have requested a formal review of the traffic calming by the church as with what seems to be the ever increasing number of vehicles passing through it needs to be reviewed for very good safety reasons.

THANK YOU Maiden Bradley Village and Community for all your support you show and give for the Community Speed Watch Team.

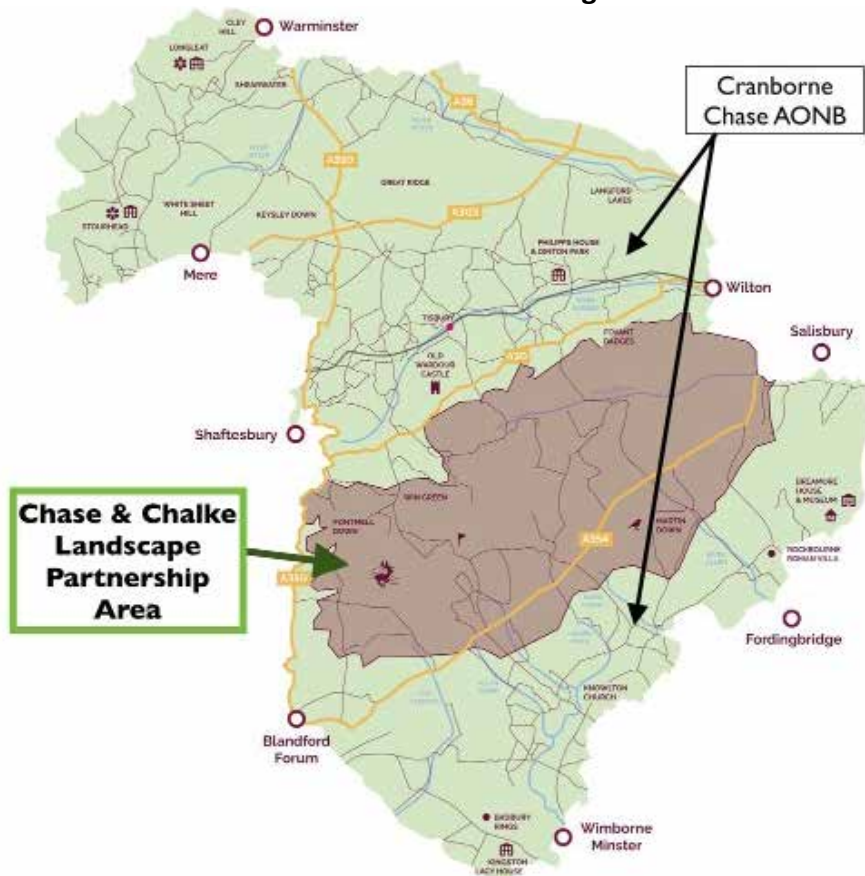
Simon Wager

**Community Speed Watch Co-ordinator,
Chairman Maiden Bradley Parish Council**

About the Chase & Chalke Landscape Partnership

The Chase & Chalke Landscape Partnership is a group of organisations working to protect and enhance the special landscape of Cranborne Chase and the Chalke Valley. We work with Cranborne Chase Area of Outstanding Natural Beauty (AONB) as our lead partner. We will be sending out updates on our projects and activities. Learn more about Chase & Chalke by going to the website:

www.cranbornechase.org.uk



**Chase & Chalke
Landscape
Partnership
Area**

**Cranborne
Chase AONB**

Farming in Protected Landscapes



Learn about the Defra-funded Farming in Protected Landscapes Programme, and how to apply.

Nurturing Nature – Book now and Join a new wave of wildlife surveyors in 2023

The 2023 programme has been launched and is available to book! Get free specialist training to help us record and protect our precious wildlife.

The Chase & Chalke Volunteer Hub is Here



ChalkEscape Walks & Talks 2023



Register on the Chase & Chalke Volunteer & Training Hub and access to all our volunteering and free training opportunities. It's quick and easy to register. Join us today!

Job vacancies

Come and work with us - we have some new opportunities and we're on the lookout for a new Chair and Vice Chair

PLENTY OF INFORMATION TO BE FOUND ONLINE



Nurturing Nature Training Programme – Various Dates

Planning and Building Guidance



Guidance and publications for planners / homeowners / architects / parish councils on planning within the AONB.





POLICE AND CRIME COMMISSIONERS ACROSS THE SOUTH WEST HAVE COME TOGETHER TO LAUNCH A SURVEY TO EXPLORE HOW CRIME IS AFFECTING RURAL COMMUNITIES.

Wiltshire Police and Crime Commissioner, Philip Wilkinson and his counterparts in Dorset, Devon and Cornwall, Avon and Somerset and Gloucestershire are hoping the survey will help them to understand how their county's rural communities are affected by crime.

Mr Wilkinson said: "In an agricultural county like Wiltshire, it's so important to keep on top of how Wiltshire Police are responding to and dealing with all forms of rural crime. A lot of work has gone into improving this as a police force and I included it in the priorities set out in my Police and Crime Plan. "I'm keen to understand what improvements have been made since the National Rural Crime Network ran a similar survey in 2018, and what we still need to put more resource into. By taking a couple of minutes out of your day to complete this survey you will be helping me to understand how I can continue to make Wiltshire safer."

In Wiltshire, the Rural Crime Team cover all heritage and wildlife crime including theft of livestock and machinery, fly tipping, poaching and hare coursing to name a few.

The survey asks rural residents if they have been the victim of any crimes in the last 12 months as well as asking what rural crimes concern them the most.

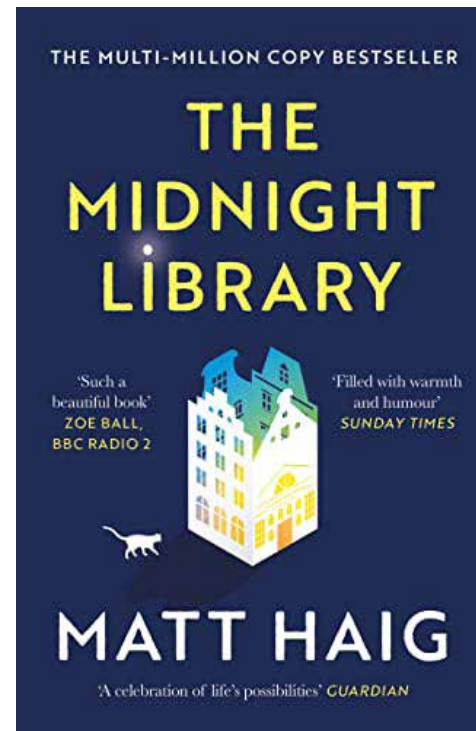
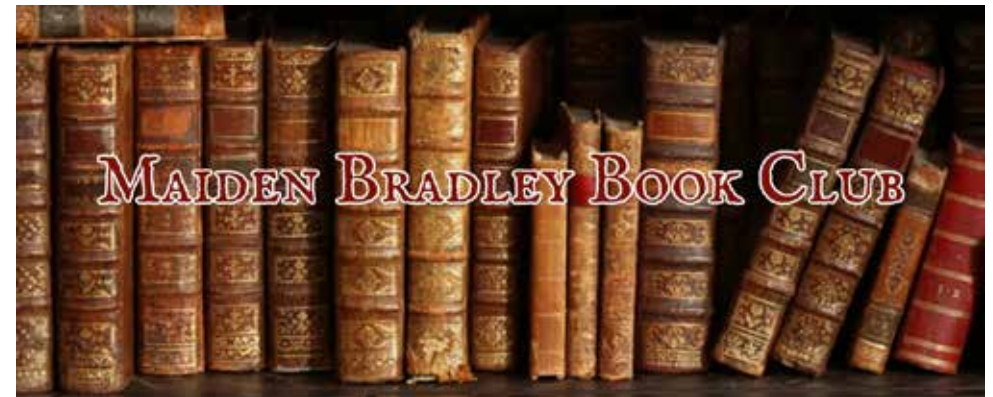
Contact Information:

Amy Pantall

Campaigns and Communications Manager

OPCC

amy.pantall@wiltshire.police.uk



MAIDEN BRADLEY BOOK CLUB GOT TOGETHER FOR AN ALFRESCO MEETING IN JUNE ON A LOVELY WARM EVENING.

Have you ever wondered what would have happened if you had made other choices in life? Do you regret choices you have made?

Nora Seed in the novel *The Midnight Library* by Matt Haig gets the chance to find out. The novel centred around her search for meaning and direction.

We discussed the interesting concepts in the book and how some readers found some of the ideas helpful and thought provoking. There were a few discussions around continuity and credibility but

overall an interesting novel which created a lot of conversation accompanied by a glass of wine and delicious food.

Our next choice is *Demon Copperhead* by Barbara Kingsolver if you would like to read along.

If you would like to join us we are meeting on 27th July at 7pm.

Message Jessica on 07515 286429 for more information

FROME FESTIVAL at the SILK MILL



7th JULY 7.30pm £13-15
BRASS JUNKIES



8th July 10-4pm FREE
SMALL PUBLISHERS' FAIR



8th JULY 6-12am FREE
SWEET MACHINE & GUESTS



9th JULY 10-5PM FREE
RING OUT WORKSHOPS



9th July 7.30pm £13-15
RADIO BANKSKA



11th July 7.30pm £13-15
COMEDY AT THE SILK MILL



12th July 1-2pm £10
MUSICKE IN THE AYRE



12th July 6-7pm £10-15
IZZY YARDLEY



13th July 7.30 £13-15
BIDDY



14th July 8.30pm £13-35
CROSSING THE ROCKIES



15th July 7pm-2am £15-18
SENSONIC & GUESTS



16th July 7.30m £13-15
CORACLE

Events at the Silk Mill in Frome, BA11 1PT
on our covered outside stage or in the gallery + bar in evenings.
Tickets & more: silkmillstudios.co.uk & fromefestival.co.uk



SILK MILL
STUDIOS & GALLERY