

MAIDEN BRADLEY

NEWS

NOVEMBER 2022



REMEMBERING LEN COOPER

DIARY NOVEMBER 2022

- 1 Tue The Witches of Selwood – Andrew Pickering
Hall 6.30pm
- 2 Wed **Christmas Bazaar Meeting – Hall 7.30pm**
Household waste collection
- 4 Fri Jon Kenzie – Live Music – Hall 8pm
- 6 Sun **Catch up – Hall – 10am**
- 7 Mon *Green recycling*
- 8 Tue Parish Council Meeting Hall 7pm
- 9 Wed **Black box and blue bin recycling**
- 13 Sun **Service of Remembrance with Jane Hurd**
All Saints Church 10.40am
- 16 Wed *Household waste collection*
- 17 Thurs Welcome Club AGM – Horningsham Hall
2.30pm
- 18 Fri Film night - Downton, A New Era – Hall 7pm
- 20 Sun Morning Worship with Celia Blay – 10am
- 21 Mon *Green recycling*
Copy for MB News to pat@visa-office.com
- 23 Wed **Black box and blue bin recycling**
- 27 Sun **Communion Service – Rev Stella Wood 10am**
- 28 Mon **Christmas Bingo with the Welcome Club**
Maiden Bradley Hall 7.30 for 8pm
- 30 Wed *Household waste collection*
- December dates
- 3 Sat **AM Christmas Wreath workshop**
PM Christmas cookery demonstration
- 11 Sun **Christmas Bazaar 2-6pm**
- 20 Tue **Carol Service 6.30pm**



USEFUL TELEPHONE NUMBERS

Speed Watch Co-ordinator	Simon Wager	simon.m.wager@gmail.com
Nadder Oil Buying Club	Email:	richard.willan@me.com
		www.oilbuyingclub.com
Neighbourhood Watch Co-ordinator	Derek Stevens	01985 844428
Community Garden	Sam Ribeck	sam.ribeck@btinternet.com
Book Club	Jessica Johnson	01985 844174
Cookery Demonstrations	Rosie Brown	01985 844236
Luncheon Club		01985 844779
Welcome Club Outings		01985 844779
Scrabble Club		01985 844919
Memorial Hall bookings		01985 845303
Dr Andrew Murrison MP	murrisona@parliament.uk	01225 358584
Mere Link Scheme		01747 860096
Bell Ringing Tuesday 7.30pm in the Church Bell Tower - beginners welcome		01985 845397
Church contact	Diana Green	01985 844500
Environmental issues		greenermaidenbradley@gmail.com

Contributions for the newsletter are always welcome.

Please email pat@visa-office.com by 20th of the month
MAGAZINE AVAILABLE ONLINE ON THE VILLAGE WEBSITE:
WWW.MAIDENBRADLEYVILLAGE.ORG.UK

EDITORIAL

First, a correction on September's Editorial. The new homes to be built on the old timber yard do not start at around the £1 million mark but at £350,000 rising to £1 million.

PLEASE will you check your garden boundary where it meets the pavement/roadway for the overhanging foliage. Brambles, flowers and bushes emanate across the pathways causing people to walk in the road – not a very safe thing to do in MB. Thank you.

PLEASE will the person or persons dumping garden waste on the verge by the recreation ground please stop doing it – it is unsightly, on owned ground and quite unnecessary when green bins are provided by the council. Thank you.

The Produce Sale held on 17th September organised by Rosie Brown and helpers raised nearly £400 towards the cost of running the Hall.

Pat Kennedy 845397 pat@visa-office.com

Maiden Bradley Memorial Hall is holding a
CHRISTMAS BAZAAR
on SUNDAY 11TH DECEMBER 2022 from 2pm
AND WE NEED YOUR HELP!

**If you would be interested in helping, please come along to the hall
for a fun planning meeting on**
Wednesday 2nd November at 7.30pm

**We will also be appealing closer to Sunday 11th December for donations
of Christmas crafts, tombola and raffle prizes and of course homemade
yummy cakes and produce**



IT'S ALL
HAPPENING
AT YOUR
HALL!



Christmas wreath-making and mince pies

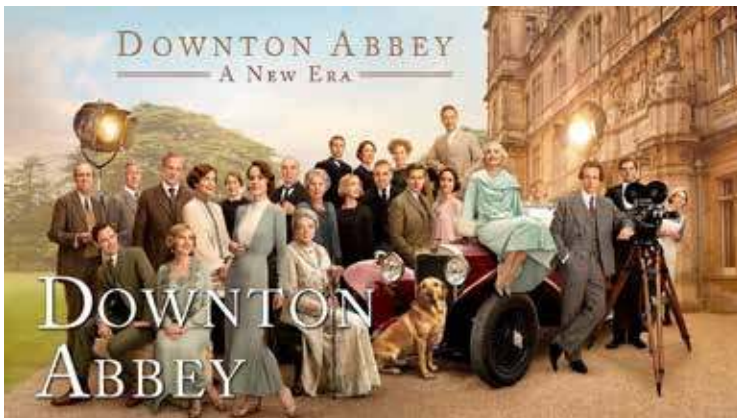
Saturday 3rd December, 10.00-12.30

Please join us to make your homemade Christmas wreath together, eat mince pies, have a cup of tea or coffee, or mulled wine, and get into the Christmas spirit!

Recommended materials to bring to make your home-made wreath:

- Wire coat hangers for the frame (or buy a metal wreath frame online)
- Bring wire so you can attach decoration to the wreath
- Secateurs/scissors for cutting
- Evergreens, fir cones, moss, ivy, berries to decorate
- Christmas Donations to the hall gratefully received

Please email Alex Channer (adrchanner@gmail.com) if you plan to join us.



**FRIDAY 18th
November
FILM NIGHT**

**doors open 7pm
£5 for raffle ticket
bring your own
refreshments**



MAIDEN BRADLEY MEMORIAL HALL

CHRISTMAS BAZAAR

SUNDAY 11TH DECEMBER 2022
FROM 2PM

If you are a talented villager and would like a table to sell your goods, please contact Sue Priester 01985 844244 or Jo Gilbert 01985 844057

REGULAR EVENTS

MONDAYS 10.30AM-11.30AM

Yoga

MONDAYS 5.00PM-6.00PM

Dr's Surgery

TUESDAY 11AM-MIDDAY

Bradley Babies

TUESDAY 1.00PM-3.00PM

Post Office Service

WEDNESDAYS 6.15PM-7.15PM

Yoga Flow

FRIDAYS 10AM-12PM

Coffee Morning

Book library available during hall opening Friday mornings

www.maidenbradleyhall.co.uk

**WINTER EVENTS COMING UP
AT THE MEMORIAL HALL**

TUESDAY 1ST NOVEMBER

The Witches of Selwood
with local author Andrew Pickering
from 6.30pm

FRIDAY 4TH NOVEMBER

Jon Kenzie

SUNDAY 6TH NOVEMBER

Catch-up Coffee Morning 10-11am

FRIDAY 18TH NOVEMBER

FILM NIGHT

'Downton Abbey a New Era'

MONDAY 28TH NOVEMBER

Welcome Club Bingo Evening

SATURDAY 3RD DECEMBER

Wreath making in the Hall 10 - 12
Christmas Cooking with Rosie 2 - 4

SUNDAY 11TH DECEMBER

Christmas Bazaar 2pm-6pm

ANOTHER EVENING OF MUSIC
WITH
JON KENZIE



AT MAIDEN BRADLEY MEMORIAL HALL

Friday 4th November 8.00pm



TICKETS €10
AVAILABLE ONLINE AT
EVENTBRITE.CO.UK
OR
ADVANCE HARD COPY TICKETS
Available from 1st October
by calling
01985 844745 or 845303
Leave a message if necessary

Many of you will have fond memories of Len Cooper and his coach. Here is an article from the Wiltshire Times of 2015:

“A COACH that has been used as a period prop in Hollywood blockbusters such as *The End of the Affair* and *Enigma* was one of the star attractions at last month’s Noggin, Nosh and Natter in Longbridge Deverill.

Purchased for Maiden Bradley firm Leathers Coaches in 1951, the Bedford OB 29 owned by Sylvia and Len Cooper is believed to be the only one in the UK still owned by its original family.

Leathers Coaches was founded by Basil Charles Leather after the First World War. He started off with a horse and cart before expanding with the help of Mrs Cooper’s father, Don Newbury.

In 1962 Mr Newbury took over the company before Mrs Cooper and her husband became joint owners in 1974, running it until 1998.

Mrs Cooper said: “Mr Leather used to lodge with my father’s mother and that’s how he got to know him.

“He was probably only 11 or 12 years old and there was just a cart and pony but being a young boy he was fascinated with it and worked for the company his whole life.

“Since we retired in 1998 we’ve been using the coach for rallies and we just take the family along with it.

“It was always the one that my dad used to drive and when we retired and sold the other buses we couldn’t part with it.

“We’ve had to refurbish the outside of it but we’ve never had anything done to the inside, it’s exactly as it was when it was bought.

“People always seem to be pleased when they see it and they usually say something like ‘oh we used to go to school on a bus like that’.”

The coach was in regular service during its time with the company – clocking up more than 500,000 miles – before it was retired in 1982 and stored away for eight years.

Since being given a mechanical overhaul in 1990 the coach has been used in a variety of roles, including appearing on the BBC1 programme *Lion Country* at Longleat and the Safari Park with Lord Bath.

It’s also starred alongside Ralph Fiennes and Julianne Moore in *The End of the Affair* and with Kate Winslet in *Enigma*.

It is a regular visitor to the annual Noggin, Nosh and Natter car rally in Longbridge Deverill.”



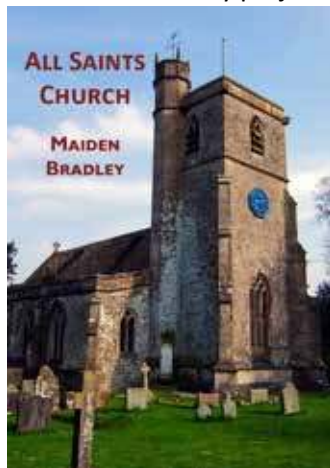
NEWS FROM ALL SAINTS CHURCH

THE HARVEST SUPPER. This was a very enjoyable occasion. Many thanks must go to all the members of “ The Friends of All Saints “ who worked really hard to organise it and raised a magnificent £850. The money will go towards the maintenance of the church building and graveyard, both desperately in need of funds for many projects.

HISTORY OF ALL SAINTS CHURCH. A new updated booklet has been printed and is available in the church at a very reasonable cost of £2. Many thanks to Celia Blay, Diana Bourne and Elaine Lavender who took the project on and successfully had new ones printed by Dean Press within a really short space of time. Elaine was very much praised for her re-setting skills.

CHURCH YARD WORK PARTY. You probably remember that a plea was placed in the October News Letter by Martin Brown for people to join us on Saturday 15th Oct to form a work party. An amazing 18 villagers arrived armed with strimmers , hoes , rakes etc , and set about tidying the church yard. We were fortunate to have mainly dry weather and Rosie kept us refreshed with home baked flapjack and beverages.

Thanks again to all of you who came to help.



THE WELCOME CLUB

On Tuesday October 17th the Welcome Club held their last monthly outing of the season hopefully more next year. We went to Cadbury Garden Centre for the whole time, arriving about 11.15am. We left about 3.15pm after doing the raffle. Everyone seemed to enjoy themselves eating, buying gifts or bulbs for springtime. Some even treated themselves to shoes and clothes. The complaint was there was not enough signage as some people got lost in the garden centre, it being so big, also not enough seats for people to rest on because some of our members are into their nineties; otherwise all good.

The next thing is our AGM where we ask people to put forward their suggestions for next year's outings; it is on Thursday 17th November at 2pm in the Horningsham Hall. Please come, we need your suggestions, and have a cup of tea and biscuit. Also our yearly Christmas Bingo will be on Monday 28th November Maiden Bradley Hall 7.30pm for 8pm and can we please ask members to give us a prize for Bingo bring it to AGM or give to Lesley, Pearl, or Tom thank you.

Pearl - 844779.

#SaveSafely this winter

With living costs rising all the time, everyone is looking for ways to save some money, so Dorset & Wiltshire Fire and Rescue Service is highlighting some areas where a saving could be a false economy – and a fire risk.

The Service is asking people to #SaveSafely, and there is a wealth of information about staying safe at home and on the roads at www.dwfire.org.uk/save-safely. This includes energy saving tips, cooking safely advice, how to stay warm safely, staying safe when cutting costs, cutting the costs of driving, and signposting to financial help.

Some top tips include:

- Pulling something like electric heaters or electric blankets out of the loft, that haven't been used for years, can be risky. Watch for signs of dangerous or loose wiring, such as scorch marks, hot plugs and sockets, fuses that often blow, or circuit breakers that trip for no obvious reasons.
- If you're drying clothes indoors rather than use a tumble dryer, keep them well away from the heat source so they can't catch fire.
- Air fryers and microwave ovens are great at saving energy when cooking, but please read the manufacturer's instructions and keep them clean between uses.
- Getting chimneys swept when you have a woodburner or open fire is essential to reduce the risk of chimney fires. Also be careful of what you burn; green (unseasoned) wood may seem cheap, but it doesn't create much heat and it creates a residue that can easily catch alight within the chimney.
- Get your boiler serviced – a well maintained boiler is more efficient and reduces the dangers of carbon monoxide poisoning.
- Only use the correct charger for mobile devices. Although it can be cheaper to buy imported and unofficial chargers, fake ones are often made with poor quality components that fail to meet UK safety regulations. This means they can cause injury, electric shocks and even fires.
- Make sure you follow the manufacturer's instructions when using wheat bags – don't heat them for too long, or at too high a temperature.



The Fire and Rescue Service offers free Safe & Well advice, which can include a home visit and the provision of smoke and carbon monoxide detectors. To request this for yourself, a family member or a vulnerable person, please call 0800 038 2323 or visit www.dwfire.org.uk/safe-and-well-visits

**Remember to #SaveSafely
when cutting costs**



**DORSET & WILTSHIRE
FIRE AND RESCUE**

MERE AND DISTRICT LINK SCHEME

Charity Registration 1062328



Link Update October 2022

We were busy in October with 86 trips including 23 to various Covid vaccination centers but mainly Tisbury. Thanks to everyone who took two or three passengers so we could take people with appointments around the same time more efficiently.

We know our work is appreciated but it is always nice to receive thank you messages. It was great to see Ben Benson's post on Mere Mutters giving a big shout out for the Link Scheme after a trip to Yeovil hospital for a one hour appointment which took four hours. Dick Morris was still there waiting for him with not a word of anger. Ben was very appreciative and thanked the great team working for the Link. We have also received a note of thanks after Derek Stevens found a client's "lost" bag in his car and returned to Mere from Maiden Bradley to return it to its owner. These examples epitomize the work and spirit of all Link volunteers who the lost bag owners say are amazing!

We were all saddened to hear that Alf Cummings had died. Alf was one of our regular clients and many of us got to know him well on his frequent trips to visit his wife Jean in her nursing home. Rest in peace Alf. We have just heard that Alf's funeral will be at St Michaels on Monday 7 November at 10.30am and Sue and I will be going.

John FitzGerald,

Chair

Mere and District Link Scheme



www.greenlifeplumbing.co.uk | 01985 845 304

Oil & Gas Boiler Installation, Servicing and Maintenance

General Plumbing Works

Full Central Heating Systems

Underfloor Heating

Air Source Heat Pump Installation, Servicing and Maintenance

New Build Contracts and Extensions

Industry and Manufacturer Accredited



CHRISTMAS COOKERY DEMONSTRATION

Come and learn how to make some new and exciting Christmas canapes, chutneys and pickles, puddings and drinks, ON SATURDAY 3RD DECEMBER FROM 2 - 4PM IN THE MEMORIAL HALL.

Please contact Rosie Brown in advance on 01985 844236 or rslbrown@hotmail.com to book a place.

COST IS £5 PER PERSON
TO INCLUDE TASTINGS AND RECIPES.

I look forward to seeing you,
ROSIE BROWN

HAVE A REAL CONVERSATION ABOUT YOUR HOME INSURANCE



Speak to your local agency today about your insurance needs

Warminster
Perry Farm, Maiden Bradley, Warminster, Wiltshire BA12 7JD
01985 845116



NFU Mutual
HOME INSURANCE

Our Agents are appointed representatives of The National Farmers Union Mutual Insurance Society Limited (No. 111982). Registered in England. Registered Office: Tiddington Road, Stratford upon Avon, Warwickshire, CV37 7BJ. Authorised by the Prudential Regulation Authority and regulated by the Financial Conduct Authority and the Prudential Regulation Authority. A member of the Association of British Insurers.

D-506BC1BA

News from The Friends of Maiden Bradley Church

On Tuesday 18th October, 50 members of the Historic Houses Association paid a visit to Maiden Bradley, taking in guided tours of Bradley House, All Saints Church and tower and concluding their 'Bradley Experience' with lunch at the Bradley Hare.

The visit to the church was arranged at very short notice as an add on to guided tours of Bradley House where, because of the high take-up by Association members, it was decided that splitting and rotating groups through the House, Church and Tower would alleviate pressure in all three areas.

Over refreshments served in the church throughout the morning, Celia Blay talked expertly about the history of the church and some of the more unusual people and features of the building, keeping her audience spell bound. For those brave enough to venture up the tower – 24 in all – James Kennedy talked about the tower, turret clock and bells and showed those who wanted to go to the top of the tower, the splendid views across to the House, park and surrounding landscape.

The visit was very much appreciated by all and the church gratefully received donations to the Friends of Maiden Bradley Church account, which raises funds for the maintenance of the building.

Each book sold raises £5 for the Church

MAIDEN BRADLEY
JUBILEE
EXHIBITION 2022



70 YEARS OF HISTORY

SOUVENIR BOOKLET

Interviews and photographs displayed in the Jubilee exhibition

Price: £5.00 per copy

ALL PROCEEDS SUPPORT THE MAINTENANCE OF ALL SAINTS' CHURCH

On sale at Friday coffee mornings at the Memorial Hall, or please contact:

Elaine Lavender: elainelavender1@outlook.com

Alex Channer: adrchanner@gmail.com

Views from the Tower



Computing@home

Computer support and training run specifically for home users.

Available remotely or in person Ideal for anyone without IT experts easily on hand. IT terrified to advanced - silver surfers a specialty.

**Contact Nigel on:
www.computing-at-home.co.uk
01985 844637**



Iles & Vincent Funeral Services,
a family focused, caring and approachable
funeral directors run by
Anna Iles and Beverley Vincent.

ILES & VINCENT **FUNERAL SERVICES** **WARMINSTER'S ONLY** **INDEPENDENT** **FUNERAL DIRECTOR**

Classic and traditional funeral ceremony, small and intimate service or no service at all with a direct cremation, we are here to help, guide and support you every step of the way with sensitivity, experience and empathy.

- Over 2 decades of experience
- 24 hr funeral service in & around Warminster
 - Tailor made funeral services
- Advice & help on all aspects of the service
 - Funeral Plans

The Cornmarket, Warminster BA12 9BX
01985 220161 (24 Hours)
info@ilesandvincentfuneralservices.co.uk

Village Hall Lottery

September

1 st	Esther Swan	£24.90	2 nd	Chris Downes	£12.40
3 rd	Sue Priestner	£7.55	4 th	Rob Green	£4.90

October

1 st	Sylvia Cooper	£24.90	2 nd	Len Cooper	£12.40
3 rd	Jannine Barron	£7.55	4 th	Phillip Henry	£4.90

THANK YOU To all those contributors to the Hall Lottery, a very big thank you for helping maintain this vital social hub. Over this year alone £600+ has gone to you in prizes and £600+ to the maintenance of the Hall.

If you would like to help support your Village Hall, please get in contact with John Priestner on 844244 who has some spare numbers. Only 50p per number per month, you can have more than one number. Half the draw's income goes to the Village Hall and half goes in prizes.

MAIDEN BRADLEY WEIGHTWATCHERS

In October, the coalition of villages supporting the campaign for HGV weight limits met to discuss next steps, after a disappointing September meeting with Wiltshire Council.

We agreed to send a new proposal to Wiltshire Council (*see letter overleaf*) arguing for a Temporary Traffic Regulation Order to pilot the HGV weight limits for a period of 18 months in Maiden Bradley, Corsley and Chapmanslade. Part of our proposal includes the temporary lifting of the weight limit on the B3089 at Willoughby Hedge, in order to allow HGVs to use this slip road to turn west onto the A303. Activating this route would make the A350/A303 junction safer and encourage more HGVs to use this route, rather than the B3092.

Wiltshire Council's current proposal contains no clear deadlines and is dependent on the development of a national local transport plan and waiting for national funding for the A350 – which we have been waiting for since 2011 and is not including in any transport planning.

We therefore proposed this Temporary Traffic Regulation Order action plan to Wiltshire Council as a feasible, local, and immediate solution to pilot the weight limits. For Maiden Bradley, this means implementing a 7.5-ton weight limit prohibiting HGVs on the B3092, except local business deliveries and farm traffic.

Martin Brown
Ian Ferguson
Alex Haig
Alex Channer



Cllr Dr Mark McClelland, Cabinet member for transport

**Mr. Alan Creedy, Head of Sustainable Transport
Wiltshire Council**

12 October 2022

CC: Cllr Richard Clewer, Cllr Bill Parks, Dr. Andrew Murrison MP, Mr. Peter Binley

Dear Cllr. McClelland and Mr. Creedy

Re: Pilot TRO for Chapmanslade, Corsley and Maiden Bradley

We are writing to respond to the proposals that you made in our meeting of 2 September, 2022, and to propose an alternative action plan, based on a pilot of weight limits through a temporary TRO.

As we all noted in the meeting, we were extremely concerned by your proposal that we wait before taking further action for the publication of new LTP guidance, a new freight strategy, as well as the updated Road Investment Strategy (RIS).

We note that the current Wiltshire LTP3, and the Freight Strategy and advisory strategic network, are valid for another four years, up to 2026. Even when updated, these strategies are unlikely to affect our problem and its necessary solution. Binding our local solution to these strategic plans just means further delay.

We strongly believe that the weight limit plan, adopted by Wiltshire Council in its 2011 TRO, still provides the most effective and credible solution for the problems faced by residents of Chapmanslade, Corsley and Maiden Bradley. We propose an action plan (below) to pilot implementation of the weight limits through a new, temporary TRO, and to use the trial period to collect data and inform planning.

Response to your concerns

First, we acknowledge the objections you raised in the meeting, and address them below:

- You mentioned the risk of legal action from Somerset Council if we proceeded on the basis of the Mouchel Parkman recommendation and 2011 TRO. This process was based on extensive expert research, and stakeholder consultation, and has a solid legal foundation. We note that Wiltshire Council cabinet members expressed full confidence in the very thorough process followed.
- We found that Somerset and Wiltshire Councils have never yet sued each other; and it is very uncommon for councils to engage in such action given that it would be difficult to justify such a use of public funds.
- The 2011 TRO supported the fundamental principle that freight traffic should be using the strategic network in accordance with the LTP objectives of reducing HGV journeys on inappropriate routes, and minimising impacts on local communities. It acknowledged the unusual severity of HGV impacts on our communities and proposed a targeted solution in line with the LTP and freight strategy.
- You suggested that the priority given to carbon emissions in a new LTP might affect the weight limit solutions. Yet Wiltshire Council's carbon strategy cannot rest on providing freight traffic with the shortest route from A to B, regardless of the suitability of the road, or the severity of social and environmental impacts. This would make the strategic network irrelevant, imply that distance is the only measure of decarbonisation, and undermine the Council's own LTP objectives.

We believe that using the B3089 slip road at Willoughby Hedge for HGVs turning west remains the safest and most practical solution to unlocking the A350 strategic route.

- You repeated concerns about accident risks associated with lifting the weight limit on the B3089 slip road at Willoughby Hedge, to allow HGVs turning west onto the A303. Yet using this slip road is by far the safer option than requiring HGVs to turn right on the A350 – this comparison was demonstrated by WS Atkins and supported by Highways England, and Wiltshire Police at the time, and is borne out by current PIA data. Indeed, the Willoughby Hedge option was not dismissed by Wiltshire Council on safety grounds (although that argument was made by West Knoyle), but because the cabinet believed that it would better to defer the TRO, in order not to preclude a bigger investment in the A350 junction – which never happened. By rejecting the B3089 solution, Wiltshire Council opted to retain the higher accident risk option and our three communities bear this burden.
- As we have noted many times, the status quo of high-volume, and high-weight HGV traffic travelling on narrow, unsuitable roads, through our communities, is not the low-risk option. There are serious and ongoing adverse impacts on residents' lives, and an increasing number of accidents – including most recently a collision between two HGVs on the B3092.

Action Plan

Waiting for a higher-value solution has resulted in no solution – and there is no reason to assume that the prospects will change in the next 20 years. We therefore propose that Wiltshire Council decouples our problem from this national and strategic conditionality and pilots the 2011 weight limits through a temporary TRO.

We propose the following actions:

1. Operate under the existing LTP3 and Freight Strategy (2026)
2. Introduce a temporary TRO for 18 months to pilot implementation of the weight limits proposed in 2011, including:
 - a. signage reducing the weight limit to 7.5t, on the A3098 from Dead Maids to Frome (see appendix below)
 - b. signage to enforce weight limit adjustments at appropriate points in Corsley and Chapmanslade (see appendix below)
 - c. lifting the B3089 weight limit on the slip road, and implementing minor improvements (road markings, signage, and simplifying fuel station exit), enabling HGVs to turn west onto the A303
 - d. signage at appropriate entry and exit points to enforce the weight limit on the B3092 and other identified roads
3. Use the 18-month period of the TRO to conduct real-time data assessment of traffic flows, and to consult stakeholders and address any concerns raised.
4. Move to a permanent implementation of the HGV restrictions on the A362, A3098, and B3092.

We sincerely hope that you will implement the trial TRO, and we look forward to hearing your response.

Regards

Yours faithfully



Maiden Bradley Weightwatchers
Please address any correspondence to: Dr. Alex Channer (alexchanner@gmail.com); and Mr. Ian Ferguson (ianferguson76@gmail.com), at Maiden Bradley Weightwatchers.

Signed on behalf of:

Chapmanslade Parish Council, Corsley Parish Council, Maiden Bradley and Yarnfield Parish Council, Maiden Bradley Weightwatchers

APPENDIX

A. Chapmanslade signage mapping

HGV issues in Chapmanslade predominantly result from HGVs taking short cuts from the A36 to the A361 and vice versa.

There is an 18t weight limit from the junction with the A36 at Dead Maids through the village to the junction with Berkeley Road after which the A3098 has a 7.5t weight limit into Frome imposed by Somerset Council. The 18t limit signs at Dead Maids are on the A3098 in such a position that a lorry coming off the slip road from the A36 is perpendicular to the signs. (See link at diagram 1)

Once a lorry has turned westwards onto the A3098 at the junction there is nowhere to turn around. There are no weight limit signs on the A36 approaching the junction only advisory signs for HGV traffic for Frome to continue along the A36. (See links at diagram 2)

In addition to the weight limit on the A3098 into Frome there is also a 7.5t weight limit on the Berkeley Road also imposed by Somerset Council. Thus, Somerset Council has protected its own communities from HGVs whilst supporting a route through Chapmanslade that links up to the A361 via the Clink Road. The A3098 route from the strategic A36 is not recognised as a freight route in the Freight Transport Plan. (See photos at diagram 3).

Diag 1. <https://goo.gl/maps/zBYk9ixu7jdrvQmi7>

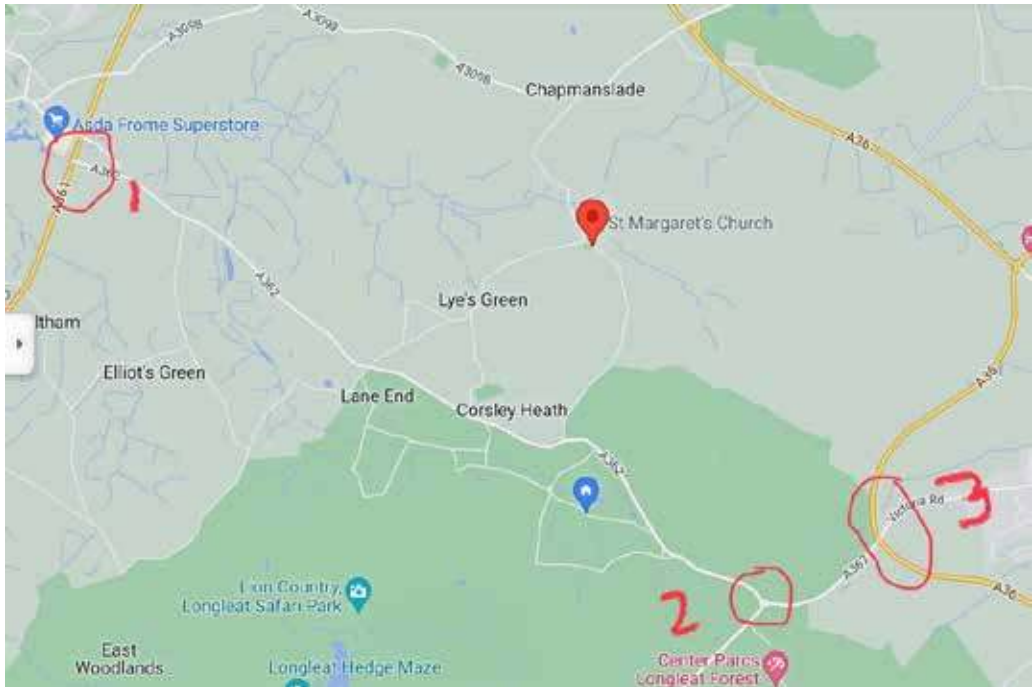
Diag 2. Photos of road signs on A36 northbound approaching slip road onto A3098

<https://goo.gl/maps/Xt7pYVzP8L8aj23D9>

<https://goo.gl/maps/fQwjiLhyLm1Jsrj6>

Diag 3. Photos of road signs around area of 18t and 7.5t restrictions where A 3098 joins outer Frome area.





B. Corsley signage mapping

This is a map showing the A362 between Warminster and Frome with junctions highlighted that would need warning signage.

1. This is the junction of the A362 with the A361. It needs a sign either side of the junction on the A361 to tell any lorries over 18t planning to turn onto the A362 that there is an 18t limit. (This relies on Somerset's co-operation, if they refuse permission to site signs there, they will have to be moved along the A362 to the County (and Parish) boundary just before the Lane End crossroads).

2. This is the Longleat (Picket Post) Roundabout which currently has an 18t weight limit sign each side of the carriageway facing oncoming traffic - these should remain in situ to inform lorries approaching from the North which will not have seen the signs at 3.

3. A36 junction with A362 which should have 18t weight limit signs on the A362 at this junction - amazingly there are none at present, meaning that lorries turning onto the A362 at this point are not aware there is a weight limit ahead 500 metres ahead at the first (Longleat) roundabout.

Wiltshire Police also advise repeater signage, a clear end in terms of signage, and signage on roads connecting to the A362.

A HAPPY MAN 4 N.E.R Q6 0-8-0 GOODS ENGINE



With the stress of moving house even though it's possibly a little more than 100 ft from my previous address. One comes upon things, pictures, letters and memories from the past as is the case here. Happy memories they are too. The two young ladies are my middle and youngest daughters Sarah and Catherine, now both grown women with families back home in South Africa.

Just a typical Sunday afternoon's running at the track. The photograph was taken in 1988 or thereabout at the West Huntspill Railway just outside Highbridge of once Somerset and Dorset Railway Works fame. During the 1st year of running this locomotive that I had just finished building. It is a 5 inch gauge Q6 0-8-0 Goods locomotive designed by Worsdell for the North Eastern Railway as it was then and what a beast it proved to be both full size and scale model. We managed to get it away on a dry track with 90 psi on the gauge and 28 yes 28 passengers behind on the club riding coaches. Got her away without slipping although well peppered with hot ash.

It was always Catherines engine regardless and once she had grown enough to reach the controls in the cab, that was it, never really got the chance to drive it much. Happily it is still in the family and I understand it's about to be re boilered this winter.

So moving house is not always traumatic.. It also brings so many very happy memories of the past that are so dear to one's heart. Maybe a dram or two by the fire as well.

Yes!` I am A Happy Man -
Simon Wager

COMMUNITY SPEED WATCH NEWS

Police Community Volunteers working on behalf of
the Wiltshire Police and Maiden Bradley



Community Speed Watch News. Produced by the Maiden Bradley Community Speed Watch Volunteers to keep the village safe and aware of our activities.

Inclement weather road works in the area have made activity in October light this Month with 3 sessions logging 321 vehicles counted. Vehicles booked for speeding over 35mph only 12. Majority being cars with an increase of average to 38 mph.

The HGV traffic continues to remain the same bugbear as previous months based on the numbers logged during a CSW activity. During an average 60 minute CSW session in October 2022 it showed an HGV every 1.52 minutes, or 648 HGV tonnes per hour through our village. This is an increase which seems to be created by the increase in HGV configuration vehicles are either "32 tonne 4 axle rigid vehicles Mainly Quarry Traffic or 44 tonne 5 / 6 axle Articulated" With a maximum length of 16.5mtrs (54ft - 2ins) Again almost exclusively Distribution Traffic which appears is steadily increasing.

With the success of the second SID (Speed Indicator Device) Frome Road. and that it is really effective. So much so that a second one of the same type is being considered b y Council for the other end of the village.

Sadly we have lost two of our CSW operatives this month through the weight of work. They have been hard and diligent workers from the very restart of the CSW operation in the vil-lage are sorely missed in all respects. A very big thank you indeed from all of us.

So it's even more important that we gain volunteers to spread the load rather than just the active seven members carrying out CSW duties. It's only 45 minutes every fortnight in good company. Think about it and help spread the load for CSW.,

We are taking a short sabbatical from CSW and return to activity on the week commencing 31st October 3rd and 4th November respectively 2022

Thank you Maiden Bradley Community for all your support of the Speed Watch Teams.

Simon Wager

Community Speed Watch Co-ordinator.

**Chairman Maiden Bradley Parish
Council**



Maiden Bradley Parish Council October 2022

Co-option - There is still a vacancy on the Parish Council, there is an application form on the front page of the Parish Council website. Do contact the Clerk if you have questions about the role or speak with one of the Council team.

Planning -Application Ref PL/2022/07626 - Householder Application
Address: 58 The Rank, Bradley Lane, Maiden Bradley, Warminster, BA12 7JF
Proposal: Alterations and rear 2 storey extension.
Resolved: Supported

Wiltshire Council Decisions -

Application No: PL/2021/08100 Site Address: Former Sydenham's Yard, Bradley Lane, Maiden Bradley, BA12 7JR

Proposal: Demolition of certain existing buildings, conversion of former office building to form 2 dwellings, and construction of 8 new dwellings, with associated highways, drainage, utilities, public open space and green infrastructure (resubmission of 20/10822/FUL)

Decision: Approve with conditions. Noted the Officers Report with the S106 Agreement.

Application No: PL/2022/04260

Application Type: Notification of proposed works to trees in a conservation area

Proposal: 199: Section felt southern beech leaning dangerously towards the B3092 200: Fell large, hollowing beech, whose weight presents a high risk to the B3092. Retained adjacent trees means no replanting is necessary

201: Thin understorey conifers and small broadleaves (marked with green paint) to enhance woodland diversity and structure. As a thinning, replanting is not appropriate

202: Fell large beech growing against and damaging the historic wall on Kingston Lane. Retained adjacent trees means no replanting is necessary

203: Cut back laurel growing on the roadside and affecting light on the road and adjacent overhead cables

204: Fell uncharacteristic Norway spruce that is undermining a historic wall and shading the community allotment 205: fell dense section of diseased woodland of 10 trees over footpath. Replace with flowering trees in jubilee ring; create village viewpoint on Public Footpath

Site Address: Bradley House, Kingston Lane, Maiden Bradley, BA12 7HL

Decision: No objections to the above specified works to be carried out in accordance with the notification and plans submitted.

Street Naming - The Parish Council approved the use of the name the Old Timberyard, there was concern that using some of the below house names that there may be confusion with Barcroft which has similar house names it was felt that any other wood names would be acceptable.

Mill House, Beech House, Birchwood, Elm House, Woodside, Oaklands, Hawthorn Cottage, Cherry Tree Cottage, Holly Cottage, and Willow Cottage.

The size of the advertising boards was queried the Clerk was instructed to investigate the legality of them.

Speed Indicator Device -Councillor Simon Wager reported that the new unit has been very successful. Council noted the correspondence from a parishioner regarding its success. The Clerk was instructed to price new unit for the speed watch area by the church. The Clerk was instructed to build in the cost to the precept budget one unit for April 2023, and possibly and for 2024.

Jubilee Trees - Councillor Sebastian Seymour reported that the project was still work in progress, the ash trees had been removed but there was still the stumps to be ground out. A new fence will be installed and heritage fruit trees in a circle will be planted. A footpath will go through the middle of them.

The offer of a 2.5-metre-tall Oak Tree (Quercus Robur) an English oak was a lovely idea and Councillor Sebastian Seymour felt sure he could find a place for the tree on the recreational area long with an Oak tree to be gifted by Councillor Susanna Brigden. The Clerk was instructed to contact the parishioners and ask them to liaise with councillor Sebastian Seymour.

Budget Preparations Council to agree its objectives for next year - The Parish Council instructed the Clerk to build in to the budget funding for the Coronation Celebrations, Community garden group, possible Village shop grant, the Link Scheme, support for the baby and toddler group, the purchase of 2 Speed Indicators Devices, the replacement seat, additional grass cutting on the recreational area, two cuts for the Knapp hedgerow, relevant LHFIC contributions and the cost to hire temporary traffic lights Clerk to check if permission into using them for the re paint of the Church railings.

Notice of items to be taken into consideration at the next meeting in November.

The Budget Report, VAT Return and Walks Leaflet.

Tuesday 8th November 2022 at 7.00pm is the date of the next meeting. All are welcome to attend.

garston

VETERINARY GROUP



Not all veterinary practices are the same

We are available to care for your pets, horses and animals 24/7

If your pet is overnight with us, they are never left alone

Garston vets - a truly independent approach to animal care for over 100 years.



Frome
01373 452225

Melksham
01225 617779

Trowbridge
01225 754021

Warminster
01985 213350

Westbury
01373 301448



www.garstonvets.co.uk





The Maiden Bradley Climate Collective

Activating Maiden Bradley's Environmental Response

MONEY AND ENVIRONMENTAL SAVINGS COMBINED!

The events of the past years in respect of the environment, the past months in respect of the war in Ukraine and the events of the past weeks in respect of politics leaves us all wondering...

The exponential rises in the cost of utilities only compounds already very challenging times. It is so easy to think we are unable to control any of these matters but, I believe in the power of tiny choices made by everyday people and how this not only saves money but also seeks to manage the impact on the environment.

There are many websites that offer great advice to save money; manage the rising cost of living and also not forget needing to have a focus on the bigger environmental picture.

This information comes from one that myself and some friends are working with:

moneysavingexpert.com

Turn down and use the thermostat (where you can)



For each degree you cut the thermostat you can cut bills by 4% for a typical home. Use the individual thermostatic valves to control temperatures in rooms that are rarely used. When the temperature in that room rises above what is set on the radiator valve, it will stop water flowing through that particular radiator – the boiler will still be on to heat other rooms, but it will use less energy. Savings may be up to £150 a year.

Fit a water-saving shower head/reduce your shower time

Reducing your water usage can cut bills for those on water meters, help the environment, and reduce energy costs too. When you use less water, you usually heat less water. Some companies provide them for free. Cutting just a minute off your shower time could save £207 a year in energy bills, and a further £105 a year in water bills if you have a meter.



Switch to LED lightbulbs



LED uses about half the energy of the bigger bulbs. Obviously turning them off when you're not in the room helps too. Bulbs do cost more, but you will save money over time and they have come down in price a great deal now. Proper Job (Frome) have a very good selection of LED bulbs

Manage draughts

Walk round your home looking for window and door draughts. Draft proofing can cut 2% off energy bills, (£50 a year on average for a typical home). Some people also put airtight clingfilm on their windows to help trap the heat in to stop it escaping.



Wash more clothes less (on a cooler setting)



Try to do one fewer load of washing a week and make sure you fill up the machine each time. In a more modern machine this can save up to £20 a year, more for older machines. Try washing on a colder setting. By washing your clothes at 30 degrees, you could save £54 a year. Dry clothes on the washing line or clothes horse.

Avoid using the tumble dryer

You could save by avoiding using the tumble dryer where possible, as it uses a lot of energy. The Energy Saving Trust reckons you could save £117 a year if you never use it. With the milder weather over the winter this may be more possible.

Reduce water boiling

The more water you boil, the more energy you use. Some people buy smaller kettles, others boil and retain unused water in a flask for later.



Don't leave your devices on standby

The Energy Saving Trust says you can save £28 a year by switching devices off standby, while British Gas says it could be £77 a year.

Use 'eco' mode on appliances where possible

Many appliances have an 'eco' mode. Using these modes will use less energy thus saving you money on your energy bills.

Car Sharing and shopping with your neighbour

Car sharing can eliminate significant carbon emissions as well as save money on pricey fuel. When it's time to go shopping, why not get together with one or two neighbours and make a day of it shopping and having a cuppa. Make a list in advance that ensures you won't need to shop more than once a week and watch your fuel expenses drop while turning a chore into a good day out. The average car in the UK drives 7,600 miles per year which releases 1,682,383 grams of CO₂ into the atmosphere each year.



Fill the dishwasher up

Running dishwashers when they are partly full is an extremely inefficient way to use energy. If you wait till it is full, you can manage one less run of the machine a week. According to the Energy Saving Trust, reducing your dishwasher use by one run a week could save £27 annually.



Use the microwave instead of the oven

If you can use your microwave instead of the oven to cook certain foods, do. They use less energy than ovens because they only heat the food, not the air around it. Air fryers (though there is an initial outlay for them) take less time to cook food so use less energy.



***Information taken from Martin Lewis on moneysavingexpert.com
tweaked for Maiden Bradley by Sharon Edney***

**Many thanks to all of you who supported
the Maiden Bradley News Coffee Morning
on October 28th.**



We raised a total of £228.25

(and the donated cakes were delicious! Thank you Mary, Carole and Pat)

The News costs between £180 and £220 per month to produce - depending on the size. That is approximately £1 per copy.

We are very determined not to compromise on the quality of this publication and to continue to deliver it free to all Maiden Bradley households.

We always welcome donations - as well as written or photographic contributions .

If you have a good nose for news and would like to be more involved with the magazine, please contact the Editor,

Pat Kennedy on 845397 or email pat@visa-office.com

***There are many assignments and ideas just waiting for
a volunteer or two to take on!***

GREEN MAN



Professional,
Eco-friendly
Carpet, Hard Floor,
Rug & Upholstery
Cleaning

FROME: 01373 470416



MEMBER 3007

www.greenmancleaning.co.uk

ALLSOP CARPETS & FLOORING

DOMESTIC ♦ COMMERCIAL ♦ INDUSTRIAL



Christchurch Street West, Frome. BA11 1EB

TEL: 01373 463866
MOBILE: 07887 953014

www.allsopcarpets.co.uk

INTERIOR
PAINTER & DECORATOR

20+ YEARS EXPERIENCE

Kaaren Arenka

Mobile: 07707 156 498

Email: kaaren.arenka@gmail.com

A HAPPY MAN 5

LIFE ON THE RAILWAY TAKEN FROM THE DIARIES OF A LONG TIME RAILWAY MAN AND A VERY DEAR FRIEND OF LONG STANDING SIMON WAGER



THE WHISKY WAGON

Another, at the time, a funny incident. I was on early's (04:00 to 16:40hrs) and Eric Reeves on late's (08:30 to 20:30 hrs) Once a week the Taunton - Yeovil daily goods dropped off a wagon of spirits for Bruttons the local brewery and today was the day.

The driver, fireman and myself had just finished our breakfast when Eric arrived, had a cup of tea, and said he would go with the locomotive out to the long siding to bring in some wagons for unloading and on the way he would knock (Fly Shunt) the Whisky wagon back to the shed., "you have the brake" he said. Fair enough: the wagon would be rolling well. It was about 300yds away, no problem we had done it all before, I would steady it down into the shed.

Eric sets off with the engine, I reckon I have time for a quick leak next door, standing there I hear the sound of wheels, but you just cannot stop can you??

The wagon sails past the toilet into the good shed. There is a terrific crash, the wagon bounces back off the stop blocks, well at least it is still on the road. I shout a warning and walk calmly with the wagon and stop it on the blocks. the shed smells strongly of whiskey.

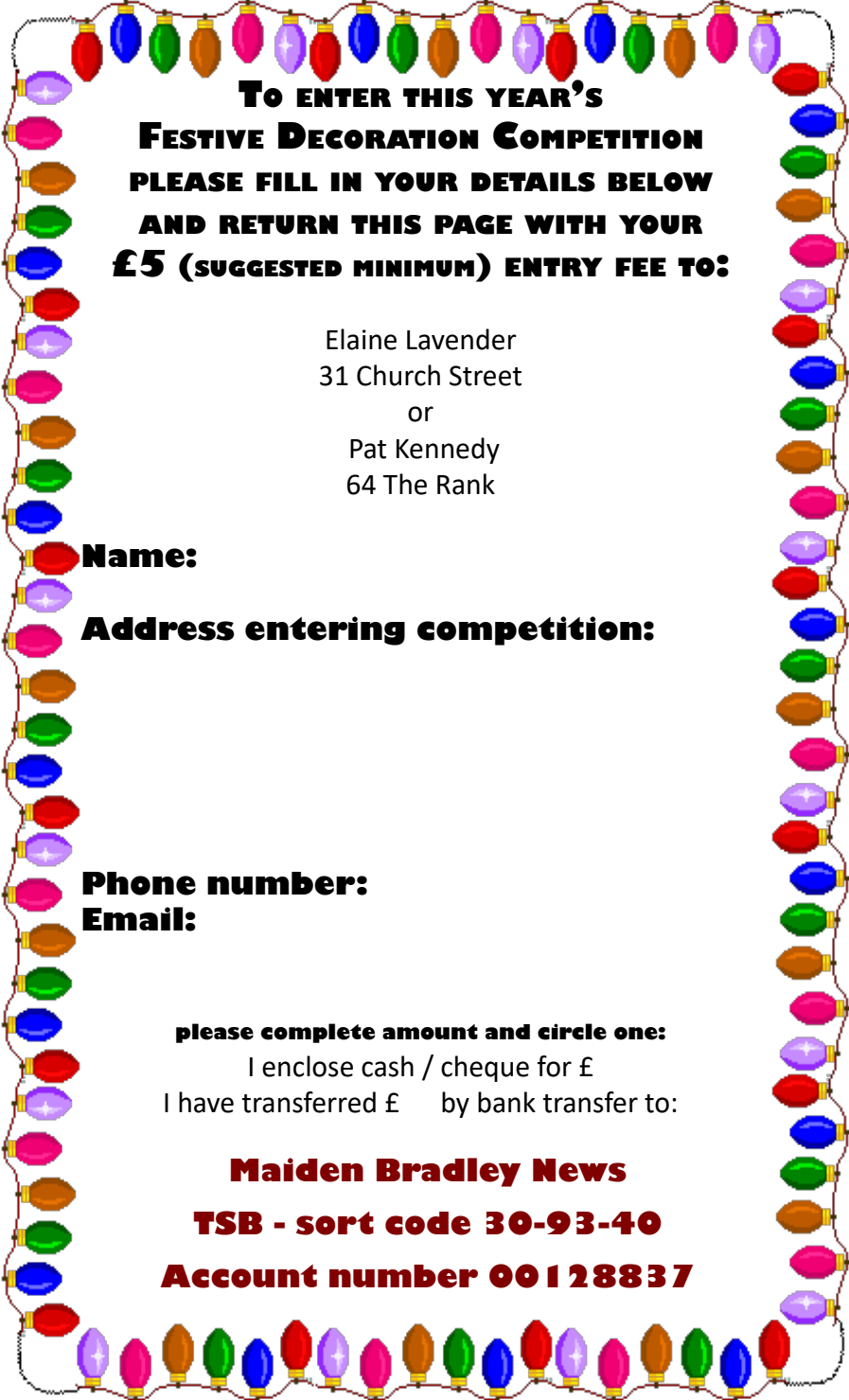
I walk calmly off up to the top of the yard. But the door to the good office opens and Yard Foreman Charlie Hawkins appears. Not Happy. You B*****S have done it this time.

Get Eric and get yourself down here quickly. I walk up to the top of the yard and explain to Eric. We go down to the office. Behind the stop blocks was the Chief clerks desk, one Mr Cornelius. Above him were shelves of files, some probably not disturbed since Brunel's days and many of these had deposited themselves and vast quantities of dust on his person, not happy either, the other clerks were dusting him down and muttering vengeful thoughts about us.

It was quite a costly incident, I believe £600.00 was mentioned, also a waste of spirit. Eric made out his usual multi page report which really only said I was obeying the call of nature. We heard nothing more about it.

Mike Herrin





**To ENTER THIS YEAR'S
FESTIVE DECORATION COMPETITION
PLEASE FILL IN YOUR DETAILS BELOW
AND RETURN THIS PAGE WITH YOUR
£5 (SUGGESTED MINIMUM) ENTRY FEE TO:**

Elaine Lavender
31 Church Street
or
Pat Kennedy
64 The Rank

Name:

Address entering competition:

Phone number:

Email:

please complete amount and circle one:

I enclose cash / cheque for £

I have transferred £ by bank transfer to:

Maiden Bradley News

TSB - sort code 30-93-40

Account number 00128837



This Year's Fundraising Festive Decoration Competition

**This year prizes will be awarded to one winner in each
of the two categories:**

THE MOST CREATIVELY CRAFTED DISPLAY

**All decorations in this category should be 'home made'
Be as creative and artistic as you like!**



THE MOST OUTSTANDING DISPLAY OF READY MADE DECORATIONS

**Make your outside walls, garden or windows sparkle
with a fabulous display of lights, baubles, a tableau
or whatever you fancy!**



**There will also be a prize awarded for the
Judge's favourite display
ENTRY FORM ON REVERSE OF THIS PAGE**